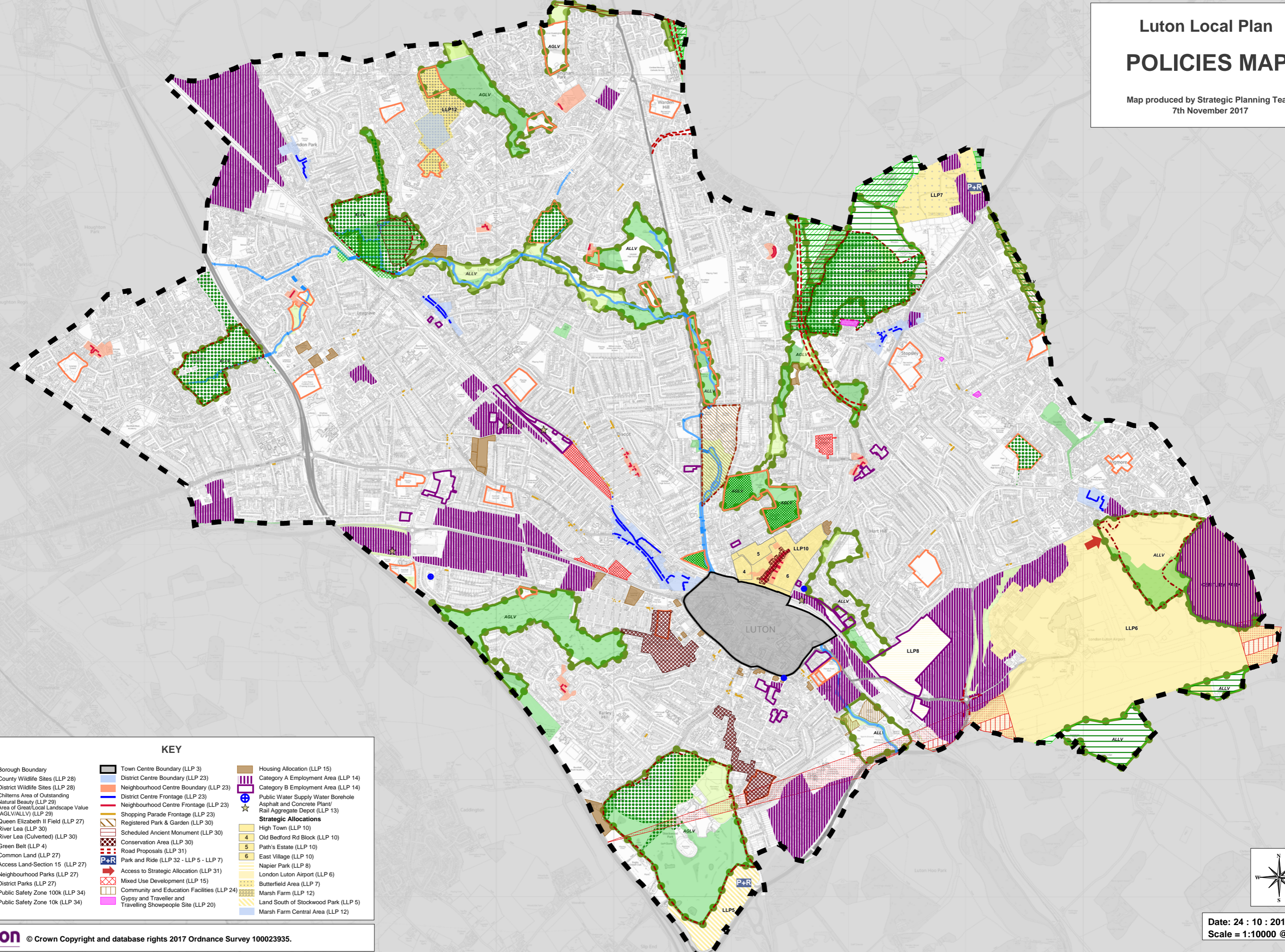


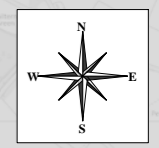
# Luton Local Plan POLICIES MAP

Map produced by Strategic Planning Team  
7th November 2017



## KEY

- |  |   |  |
|--|---|--|
| Borough Boundary   | Town Centre Boundary (LLP 3)                                | Housing Allocation (LLP 15)                              |
| County Wildlife Sites (LLP 28)                           | District Centre Boundary (LLP 23)                           | Category A Employment Area (LLP 14)                      |
| District Wildlife Sites (LLP 28)                         | Neighbourhood Centre Boundary (LLP 23)                      | Category B Employment Area (LLP 14)                      |
| Chilterns Area of Outstanding Natural Beauty (LLP 29)    | District Centre Frontage (LLP 23)                           | Public Water Supply Water Borehole                       |
| Area of Great/Local Landscape Value (AGLV/ALLV) (LLP 29) | Neighbourhood Centre Frontage (LLP 23)                      | Asphalt and Concrete Plant/Rail Aggregate Depot (LLP 13) |
| Queen Elizabeth II Field (LLP 27)                        | Shopping Parade Frontage (LLP 23)                           | <b>Strategic Allocations</b>                             |
| River Lea (LLP 30)                                       | Registered Park & Garden (LLP 30)                           | High Town (LLP 10)                                       |
| River Lea (Culverted) (LLP 30)                           | Scheduled Ancient Monument (LLP 30)                         | Old Bedford Rd Block (LLP 10)                            |
| Green Belt (LLP 4)                                       | Conservation Area (LLP 30)                                  | Path's Estate (LLP 10)                                   |
| Common Land (LLP 27)                                     | Road Proposals (LLP 31)                                     | East Village (LLP 10)                                    |
| Access Land-Section 15 (LLP 27)                          | Park and Ride (LLP 32 - LLP 5 - LLP 7)                      | Napier Park (LLP 8)                                      |
| Neighbourhood Parks (LLP 27)                             | Access to Strategic Allocation (LLP 31)                     | London Luton Airport (LLP 6)                             |
| District Parks (LLP 27)                                  | Mixed Use Development (LLP 15)                              | Butterfield Area (LLP 7)                                 |
| Public Safety Zone 100k (LLP 34)                         | Community and Education Facilities (LLP 24)                 | Marsh Farm (LLP 12)                                      |
| Public Safety Zone 10k (LLP 34)                          | Gypsy and Traveller and Travelling Showpeople Site (LLP 20) | Land South of Stockwood Park (LLP 5)                     |
|  |   | Marsh Farm Central Area (LLP 12)                         |



Date: 24 : 10 : 2017  
Scale = 1:10000 @ A0