

Ashcroft Play Area

Luton Borough Council - REV C

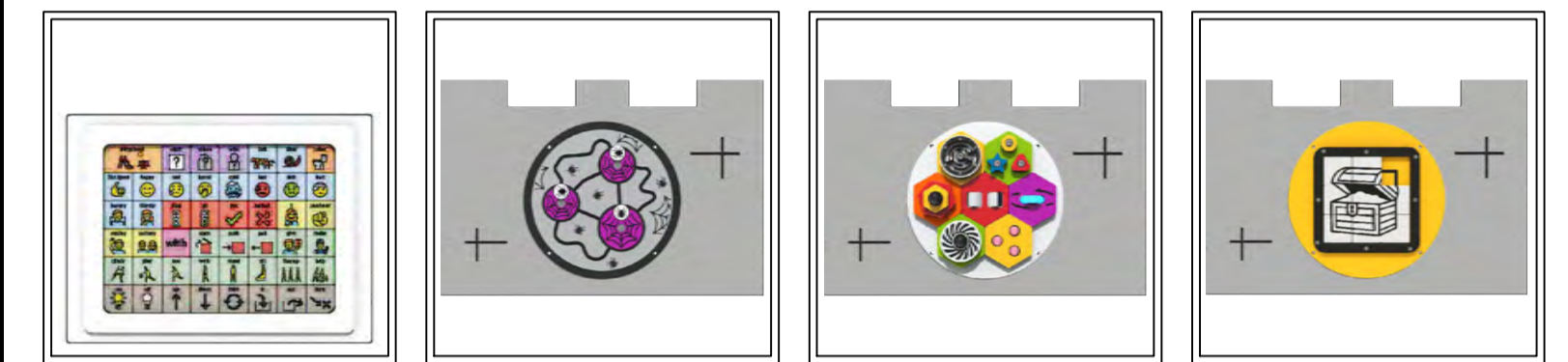
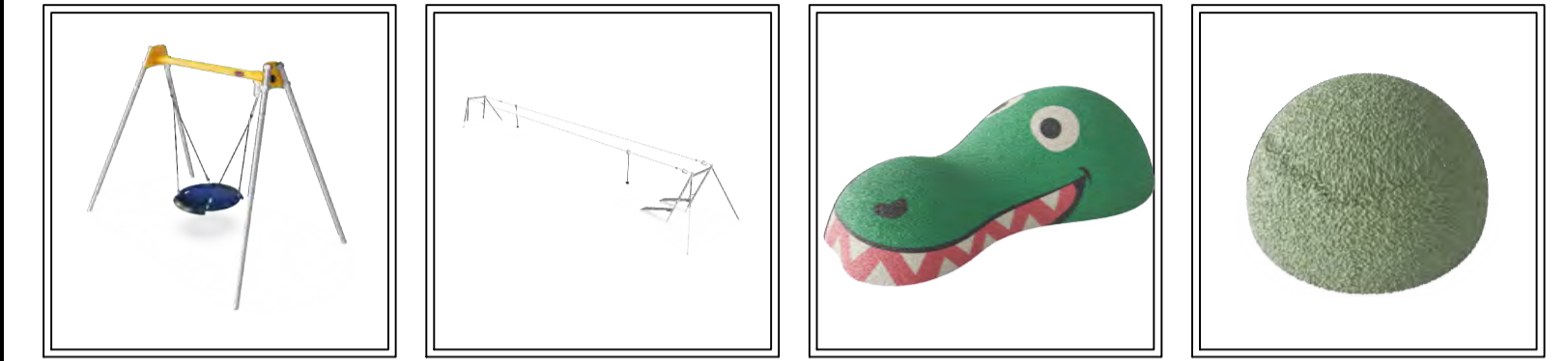
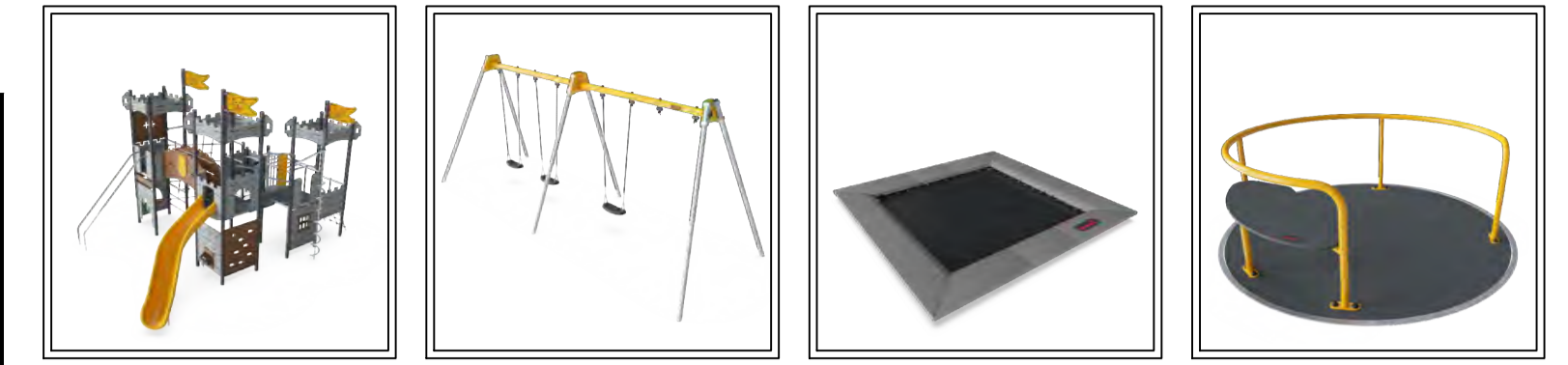
20 New pieces of equipment

118 Plus Capacity of users

0-12 Play for all ages and abilities

Equipment:

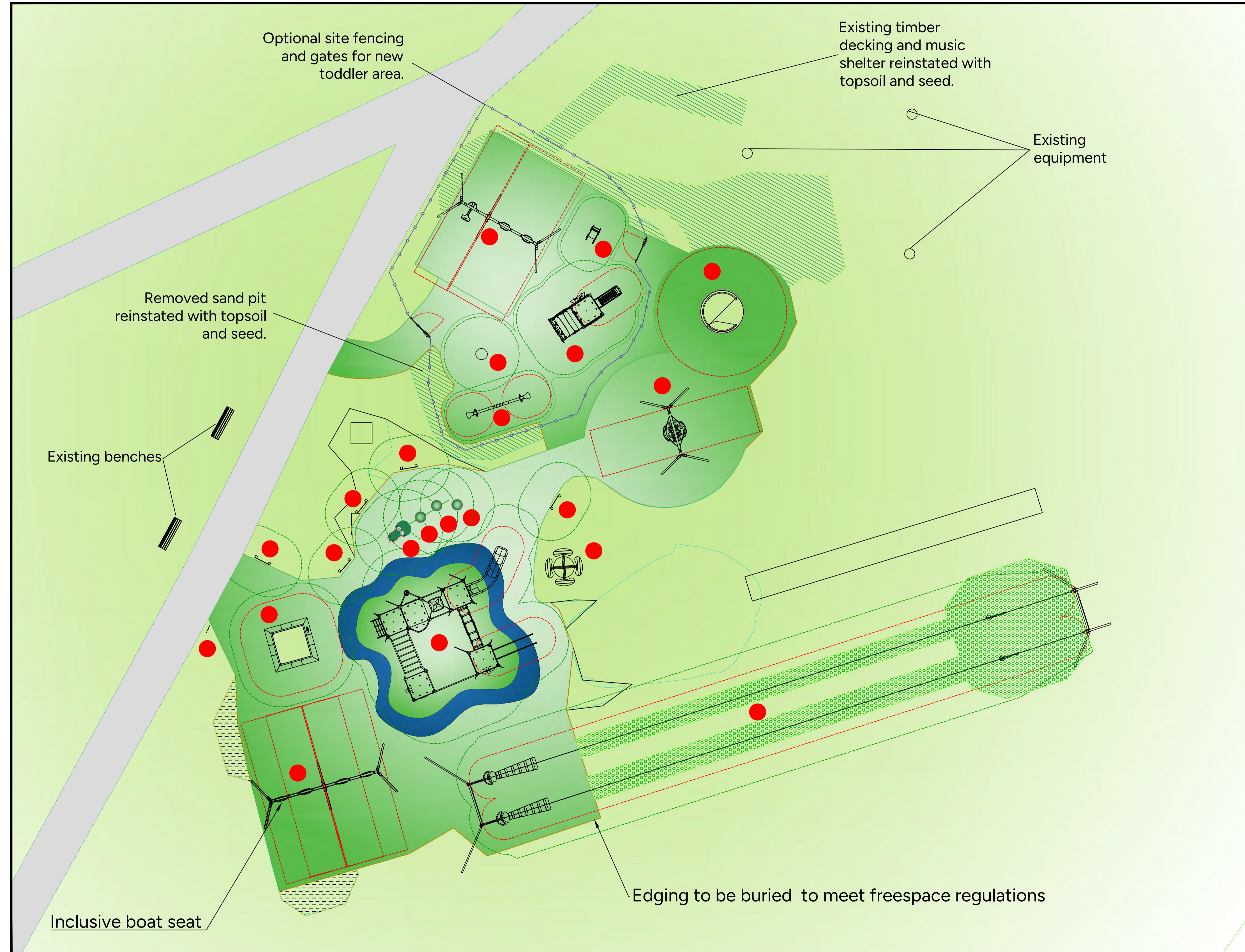
Ashcroft Play Area Equipment - CAS-518606-L1K9Z0/SO259168



Ashcroft Play Area Equipment - CAS-579204-D8K6S9



x2 Cradle Seat x1 You + Me



Design assumes the site will be levelled by other (max. gradient 1:100), free draining and with good access. Quotation and design is submitted site unseen, we reserve the right, following a full site survey to amend the design appropriately. Areas and dimensions shown are critical for compliance with European safety standards EN1176 & EN1177, if in doubt ask.

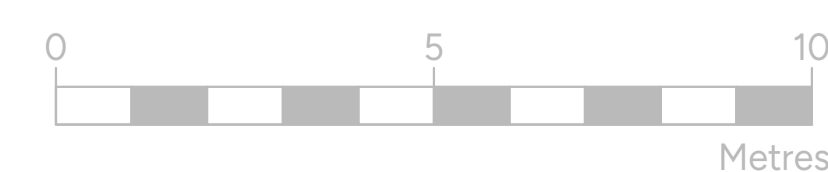
Grass areas should be well established prior to grass mat safety surfacing being laid.

Surfacing key:

	ChildsPlay Carpet Green		Grassmat Surfacing
	Tarmac Path		Existing Grass
	Reinstated Sand Pit and Decking Area Soil and Seed		Bowtop Fencing Optional Extra

Site notes:

- Removal of existing timber castle, cableway & relevant mounding, carousel, 3x play panels, 2x post of previous spider swing, frame of pendulum swing, 1x post & digger in sand pit, existing decking and fencing, music shelter, x2 play panels and old hammock posts
- Dig out rubber mulch surfacing, where we are extending surfacing in these areas we will dig a further 50mm to allow for 100mm MOT stone baseworks for to make new surfacing flush.
- Dig out wetpour, stone baseworks and edging and reinstate to soil and seed in areas not needed.
- Install new timber edging where needed for new carpet to be pinned to.
- Excavate 100/150mm and fill with 100mm MOT stone for new surfacing extension.
- Supply and lay new equipment, carpet safety surfacing, grassmat surfacing.
- Play sand to be removed and reinstated with 200mm of topsoil and seed
- Works include complete removal of Stopsley Adventure Playground, including play equipment, fencing and surfacing. To be soil and seeded back to grass.



KOMPAN
Let's play

KOMPAN Ltd.
Serenity House
Furzton Lake
Milton Keynes
MK4 7GA

www.KOMPAN.co.uk
T:01908 201002
F:01908 201007
E:KOMPAN.UK@KOMPAN.com

©copyright of this drawing remains the property of KOMPAN Ltd. and the KOMPAN group. This drawing may not be reproduced without prior permission of KOMPAN Ltd. Any infringement will be pursued.

Project & Title Ashcroft Play Area		Designed by A.B./L.R./M.Fitz/R.P
Client Luton Borough Council	Date 21/05/2026	Scale 1:100 @ A1
Drawing No. CAS-579204-D8K6S9	Sheet 1 of 1	Revision REV C