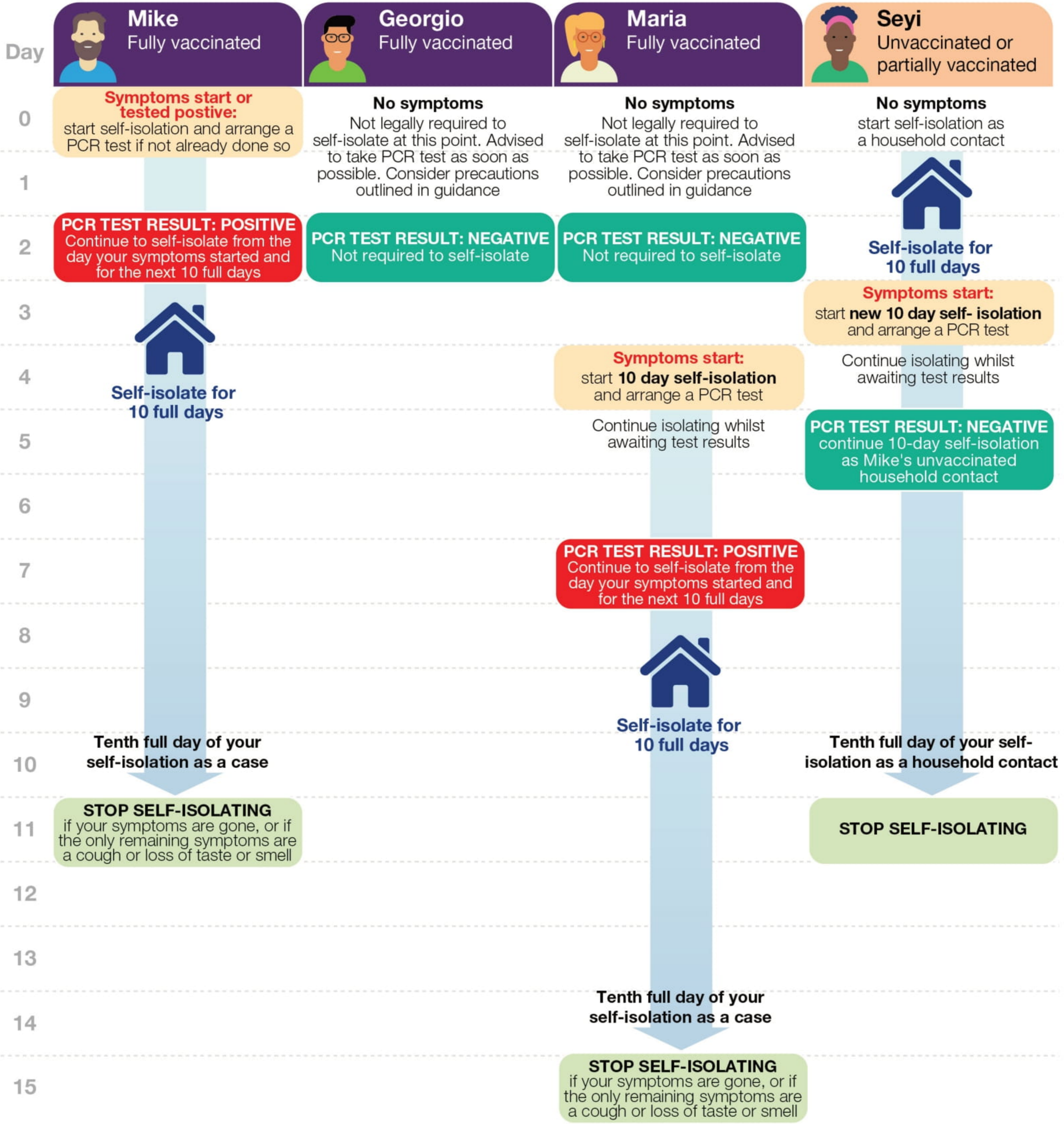




# Stay at home and self-isolate.

Please see [detailed guidance online](#).

In this household, Mike lives with Georgio, Maria and Seyi. Mike is the first case of COVID-19 in this household and is required to self-isolate. This illustration provides examples of when other household members would, or would not need to self-isolate.



### Self-isolate for 10 full days.

You need to self-isolate from the day the first person in your household started symptoms and for the next 10 full days. If they did not have symptoms, self-isolate from the day of their test and for the next 10 full days.

### To self-isolate means:

Do not go to work, school, or public areas and do not use public transport or taxis. Only leave your home to get to your test if you need to, observe strict social distancing advice and return immediately afterwards.

### See

[detailed guidance online](#)  
**for contacts that are not required to self-isolate.**