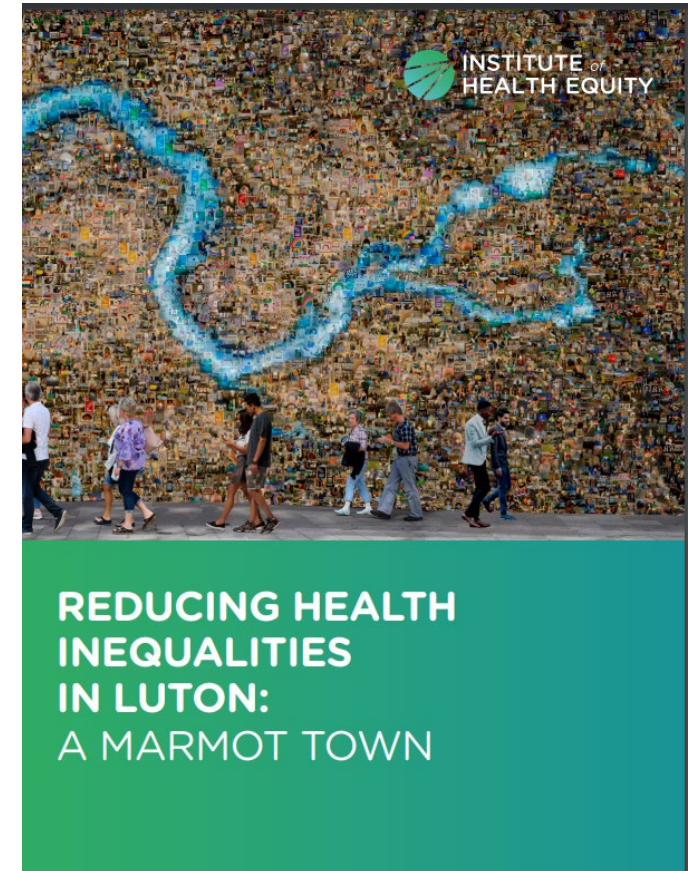
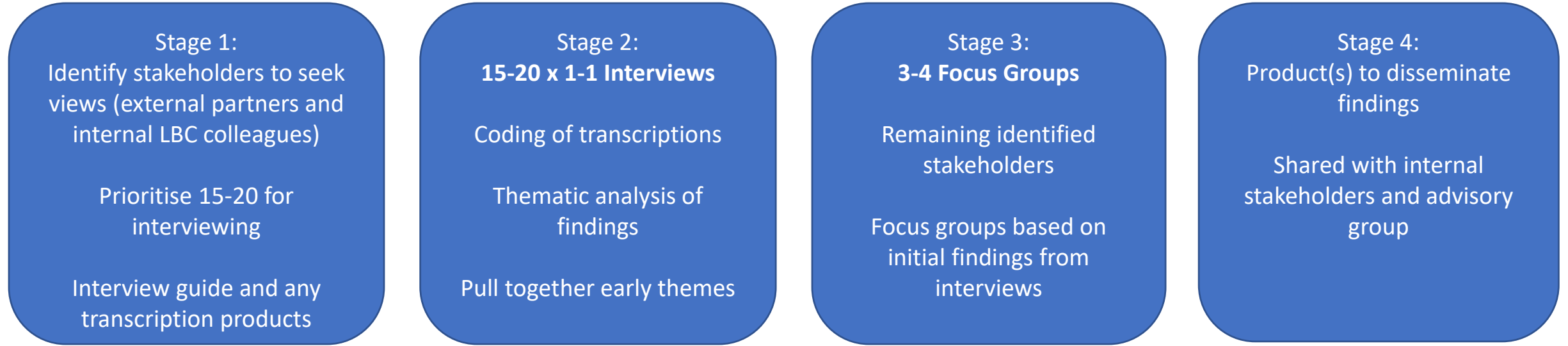


# Marmot Town – Evaluation

- To understand the impact of the Luton Marmot report on system-wide efforts to tackle health inequalities through the wider determinants of health.
- To develop a set of measures to illustrate early impact and set out an approach for future outcome measurement structured around the eight Marmot principles set out within the report.
- To activate the health equity system through the process of evaluation, through stakeholder engagement and re-enforcement of priorities and direction of travel



# Qualitative insight gathering



**Stakeholder engagement event**  
-informed by qualitative findings

Findings from the qualitative study and stakeholder engagement event will be written up and feed into the wider evaluation  
Explore dissemination opportunities with IHE

# Themes from Qualitative Research so far...

## Awareness

- Varying views on the “brand”
- Mixed understanding of health inequalities/social determinants of health amongst teams
- Need to translate the principles into something more meaningful and specific
- Public aren't aware- but do they need to be?

## Strategic alignment

- Varying views on strategic alignment, some suggested that it aligns well with Luton 2040 and ICB strategic ambitions, others suggested potential confusion/duplication between various strategies
- Values do appear to align well across Luton
- Important to embed in organizational cultures

## Existing inequalities work

- Examples of health inequalities / social determinants of health focused work
- Organisations using Marmot report to shape their strategies
- Using Quality Improvement Methodology to improve services
- Using procurement to increase public sector investment in local organisations

# Themes from Qualitative Research so far continued...

## Existing inequalities work

- Examples of health inequalities / social determinants of health focused work
- Organisations using Marmot report to shape their strategies
- Using Quality Improvement Methodology to improve services
- Using procurement to increase public sector investment in local organisations

## Opportunities

- Allocate resources in line with Marmot
- Maximising our existing assets including people
- Forecast to make sure we understand current and future needs
- Empower communities

## Barriers

- Data granularity/intelligence of current and future position
- Limited levers of influence
- Competing priorities
- Lack of public voice
- Commissioning and procurement process

# Marmot indicators

Indicators used across JSNA and Luton 2040

Where possible measure geographical and/or cohort inequalities

Baseline's to be included in final document

Marmot Indicator
Minimum Income Standard (Luton adapted model)
Child Poverty (after housing costs)
Percentage of households in fuel poverty
Air Quality Annual Status Report (ASR)
Percentage children achieving a good level of development at 2-2.5 years (in all five areas of development)*
Percentage children achieving a good level of development at the end of Early Years Foundation Stage (Reception)
Dental decay in 5-year olds
Young persons mental health
Hospital admissions for self-harm for young people aged 10-24
Proportion of children that are overweight or obese (At year 6)
Smoking prevalence
Activity levels (active, fairly active, inactive)
Adult obesity rate
Percentage of loneliness in population (often/ always, some of the time, occasionally, hardly ever, never)
Life expectancy, Female, Male
Mortality, All cause, Male, Female
Mortality by cause, all persons
Housing affordability ratio