

Luton and implementation

Dr Jessica Allen

July 2023

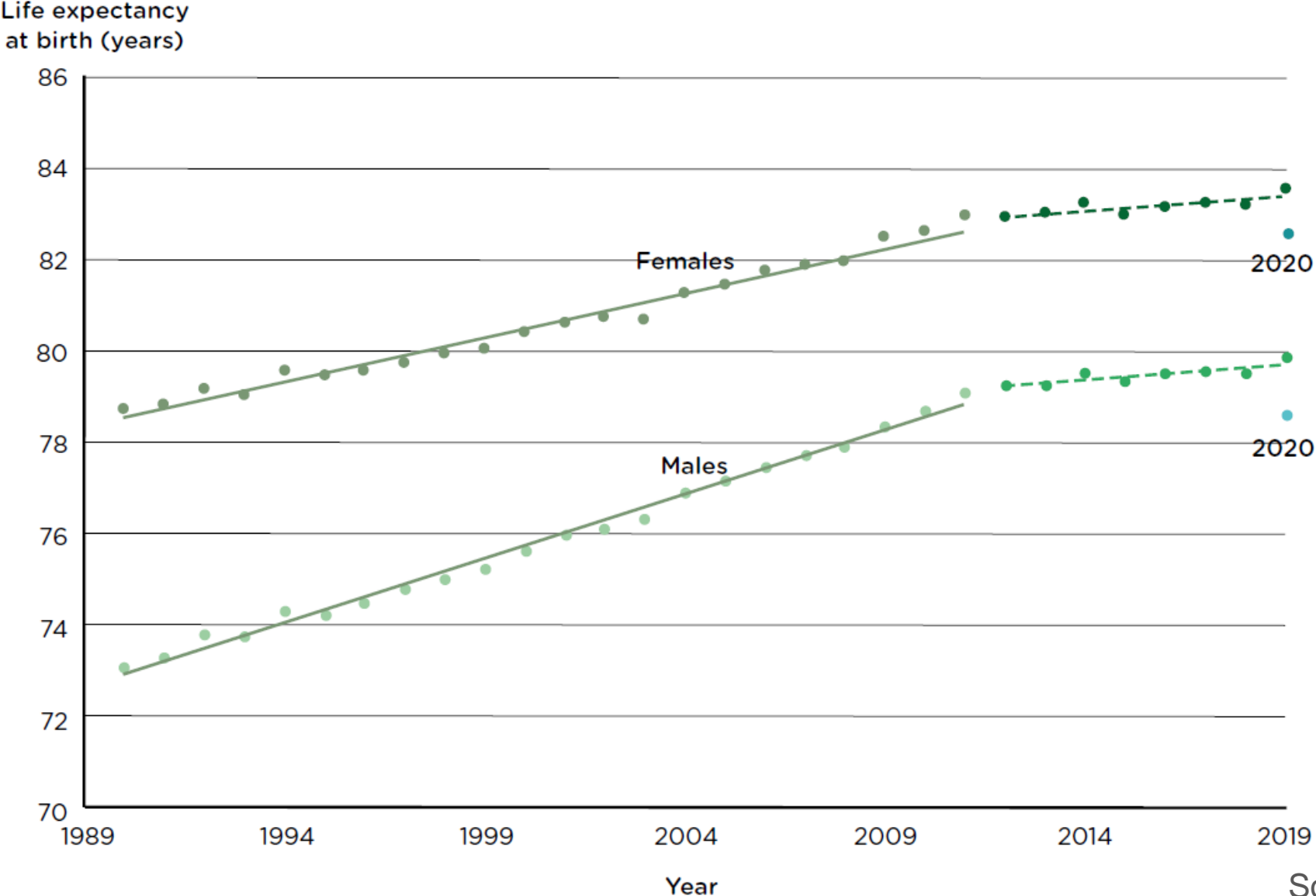


**REDUCING HEALTH
INEQUALITIES
IN LUTON:
A MARMOT TOWN**

Purpose of the Marmot Report for Luton

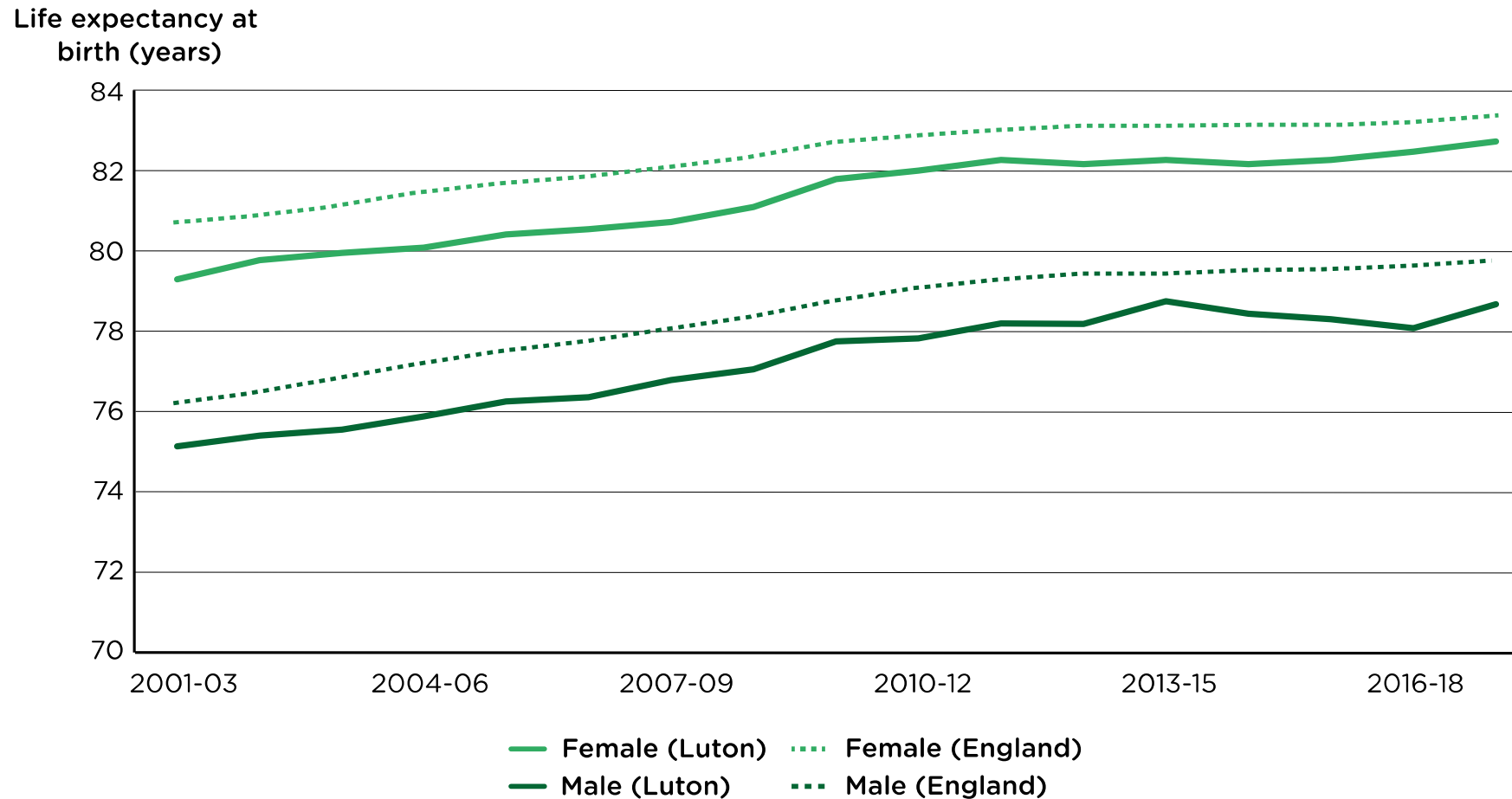
- Assess health inequalities in Luton
- Assess inequalities in the social determinants of health
- Develop proposals for action
- Develop a Luton Health Equity System
- Link Luton with other places in the UK which are prioritizing health equity

Increases in life expectancy at birth stalling in England



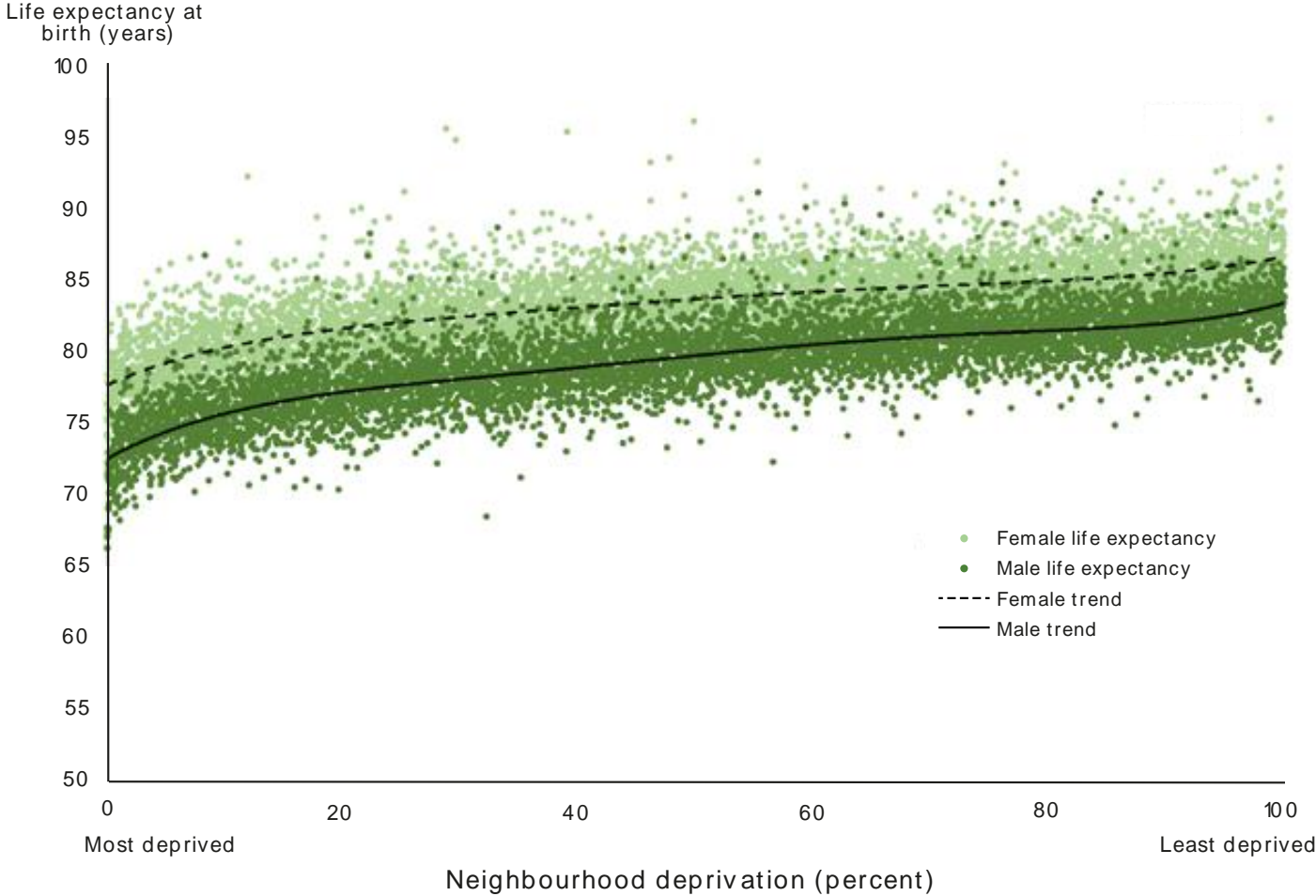
Life expectancy at birth, Luton and England, 2001-2019

Figure 2.1. Life expectancy at birth, Luton and England, 2001-2019



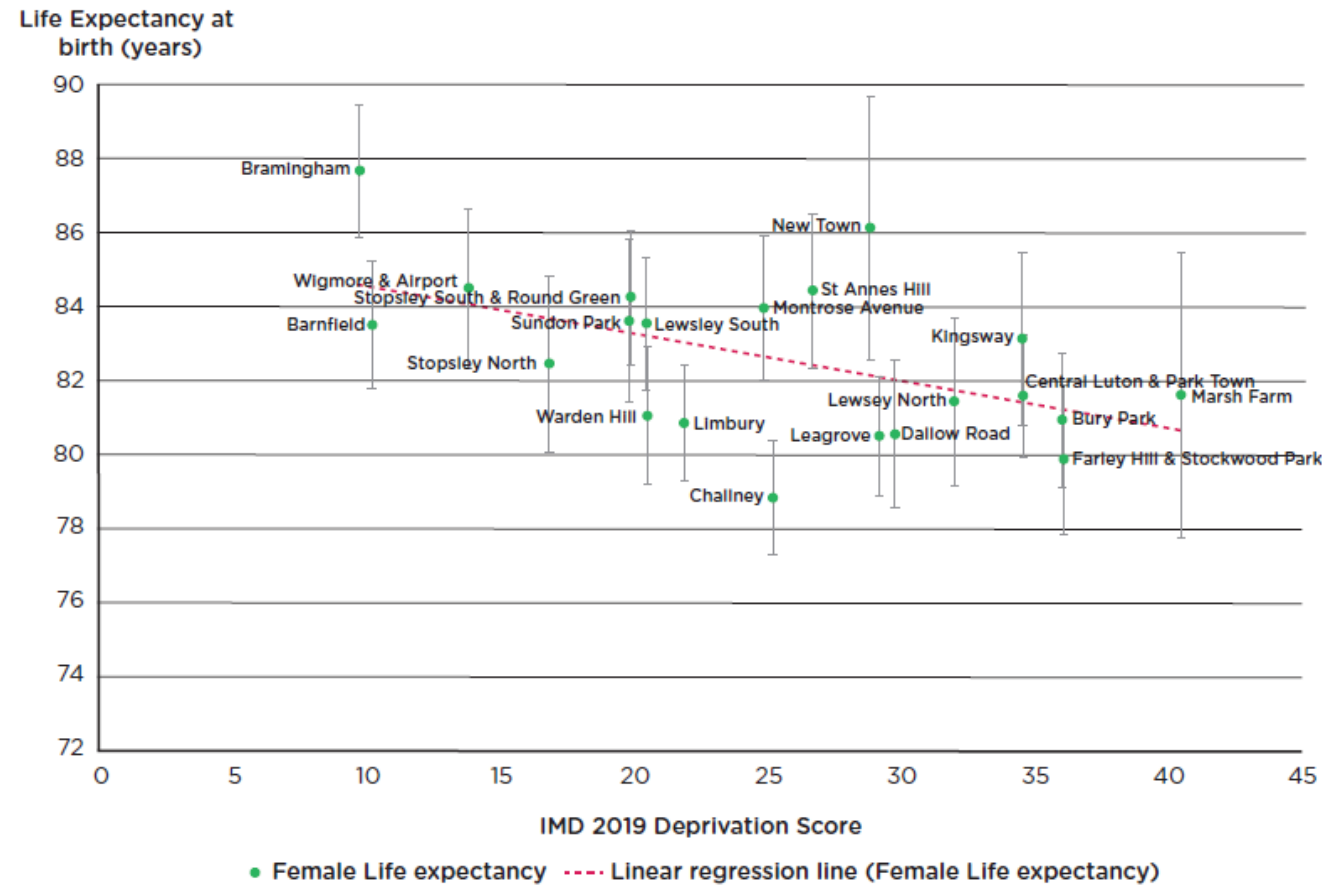
Life expectancy at birth for neighbourhoods in England by sex and level of deprivation 2016-20

Figure 1.4. Life expectancy at birth for neighbourhoods in England, by sex and level of deprivation, 20 16–20



Female life expectancy at birth in Luton

Figure 1. Female life expectancy at birth in Luton, by level of deprivation at local level, 2016-2020

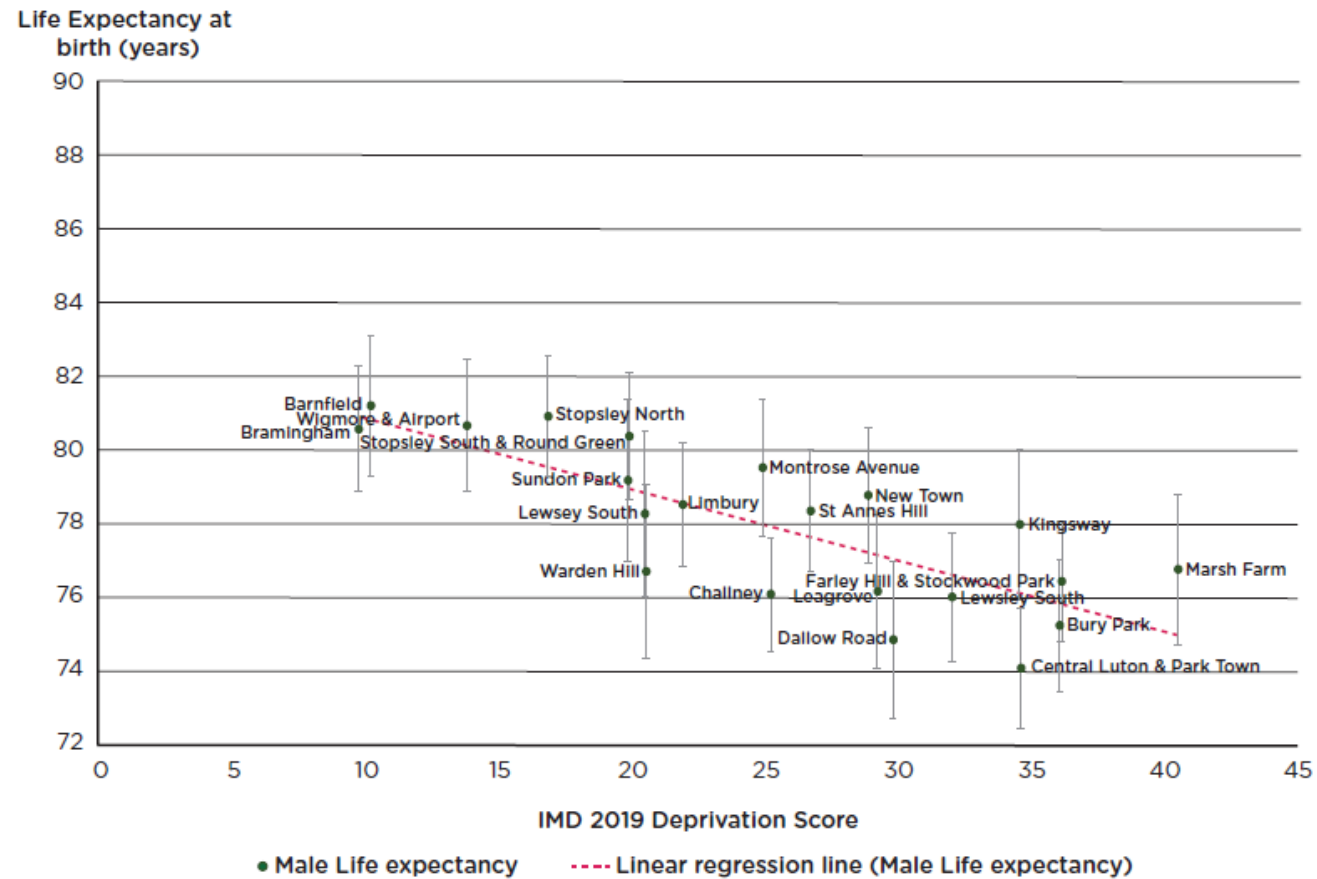


Source: ONS, 2021 (4)

Notes: The data are for IMD 2019 scores of middle layer super output areas (MSOA). R^2 0.6152 for the regression line. This is the proportion of the variance explained by the variable in the regression model

Male life expectancy at birth in Luton

Figure 2. Male life expectancy at birth in Luton, by level of deprivation at local level, 2016–2020

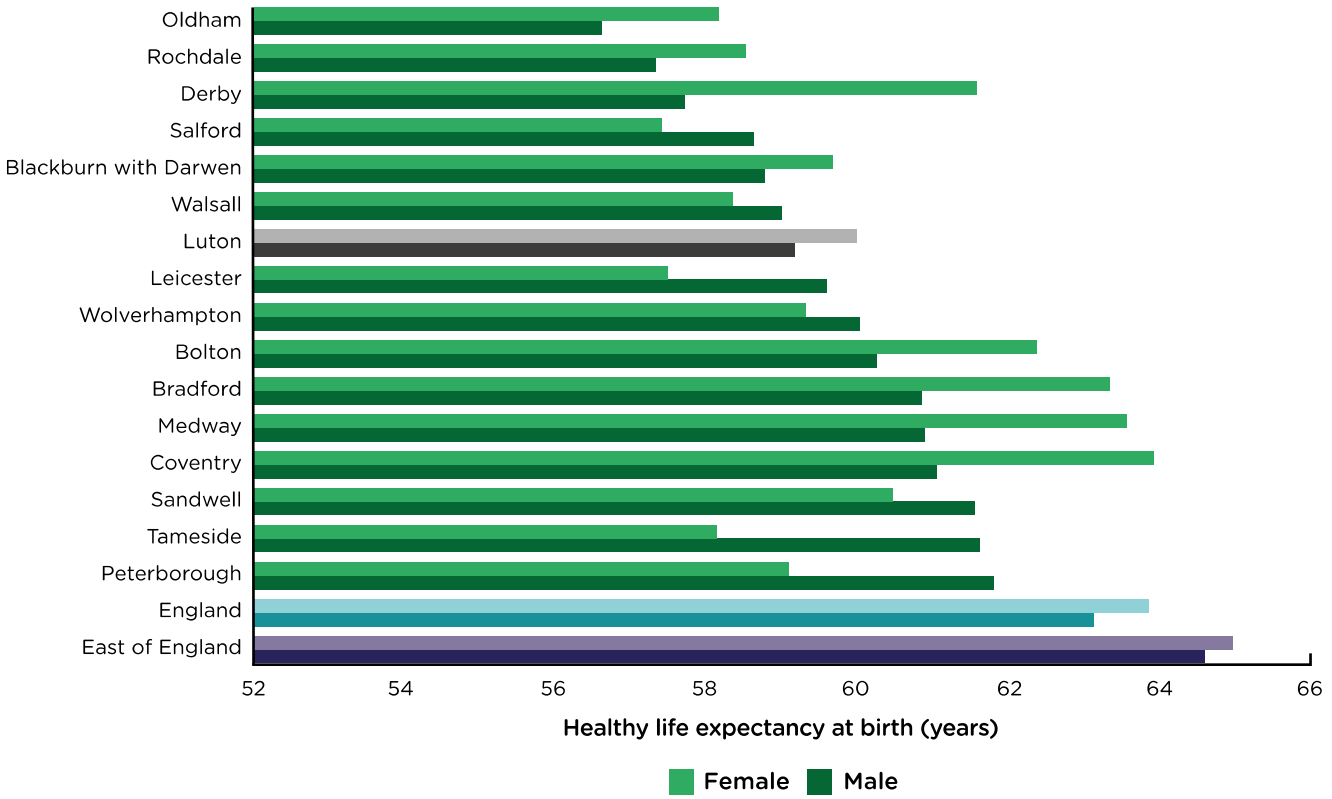


Source: ONS, 2021 (4)

Notes: The data are for IMD 2019 scores of middle layer super output areas (MSOA). R^2 0.6152 for the regression line. This is the proportion of the variance explained by the variable in the regression model

Healthy life expectancy at birth, Luton and its statistical neighbours

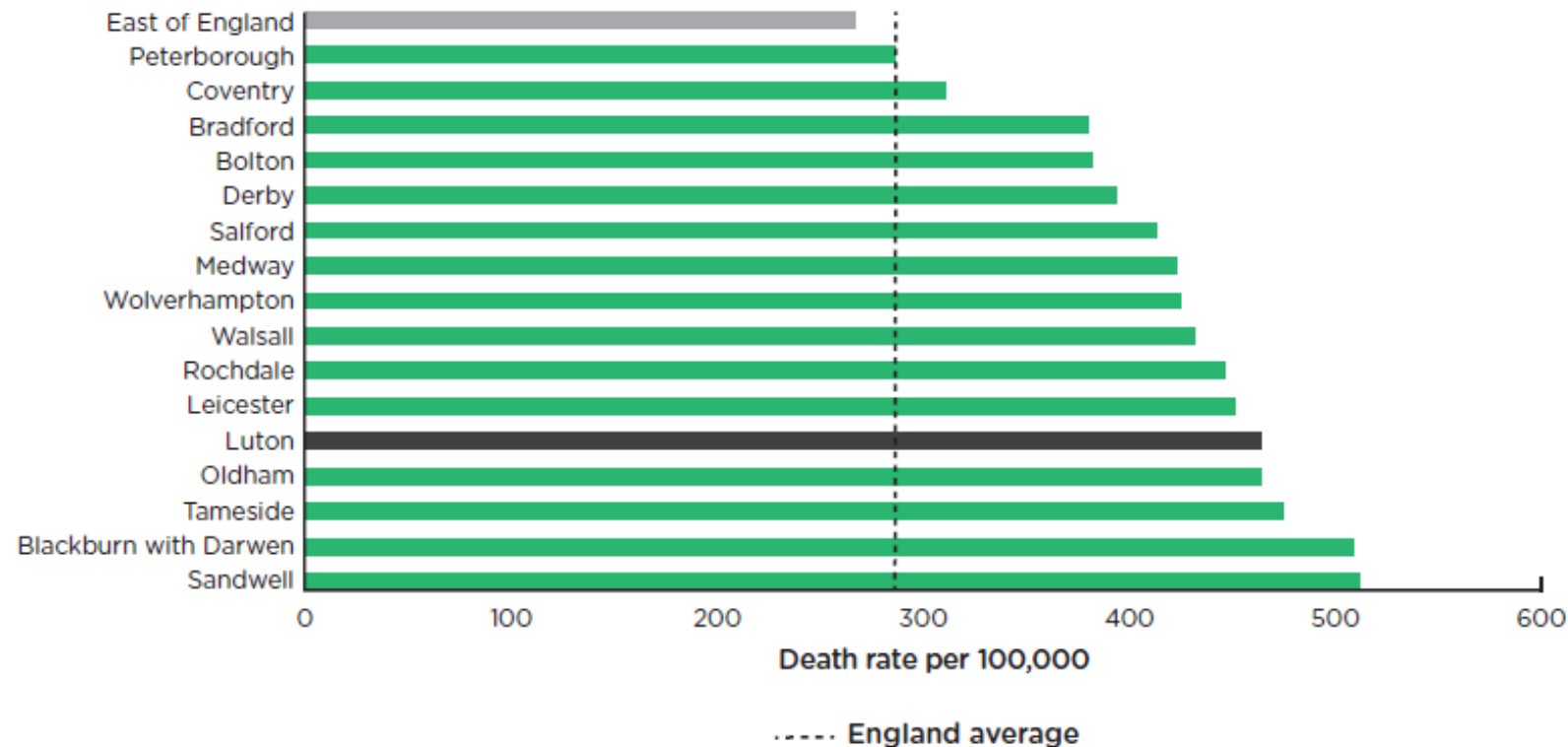
Figure 2.4 Healthy life expectancy at birth, Luton and its statistical neighbours, 2018-2020



Source: ONS, 2022 (43)

Death rates involving COVID-19 in Luton and its statistical neighbours

Figure 4. Death rates involving COVID-19 in Luton and its statistical neighbours, all ages, March 2020 to January 2022



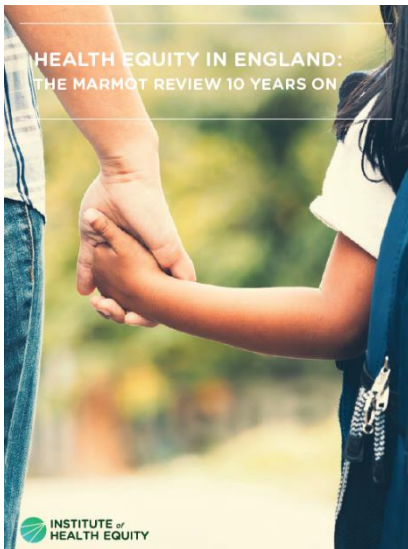
Source: OHID 2022 (10)

Note: Rates are age-standardised mortality rates per 100,000

Drivers of health inequalities

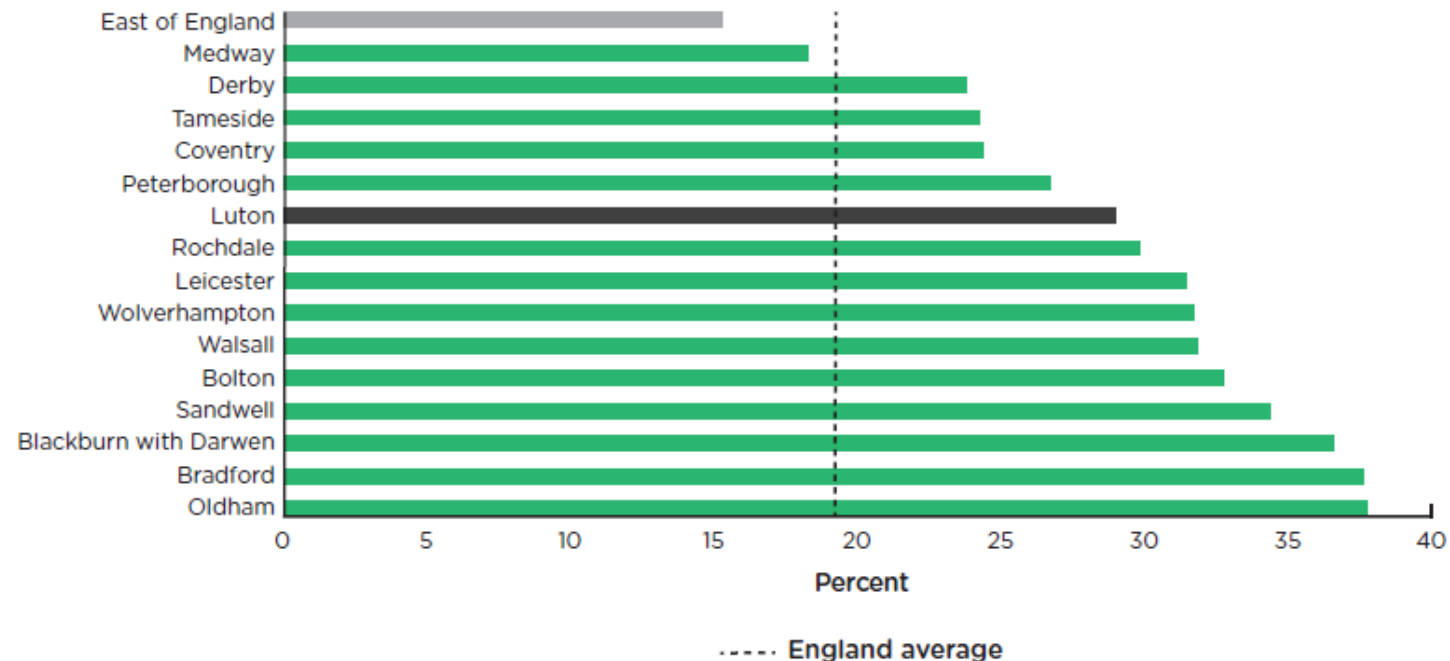
Marmot Principles

1. Give every child the best start in life
2. Enable all children, young people and adults to maximise their capabilities and have control over their lives
3. Create fair employment and good work for all
4. Ensure healthy standard of living for all
5. Create and develop healthy and sustainable places and communities
6. Strengthen the role and impact of ill health prevention
7. Tackle racism, discrimination and their outcomes
8. Pursue environmental sustainability and health equity together



Percent of children under 16 in relative low-income families, Luton and its statistical neighbours

Figure 5. Percent of children under 16 in relative low-income families, Luton and its statistical neighbours, 2019/20

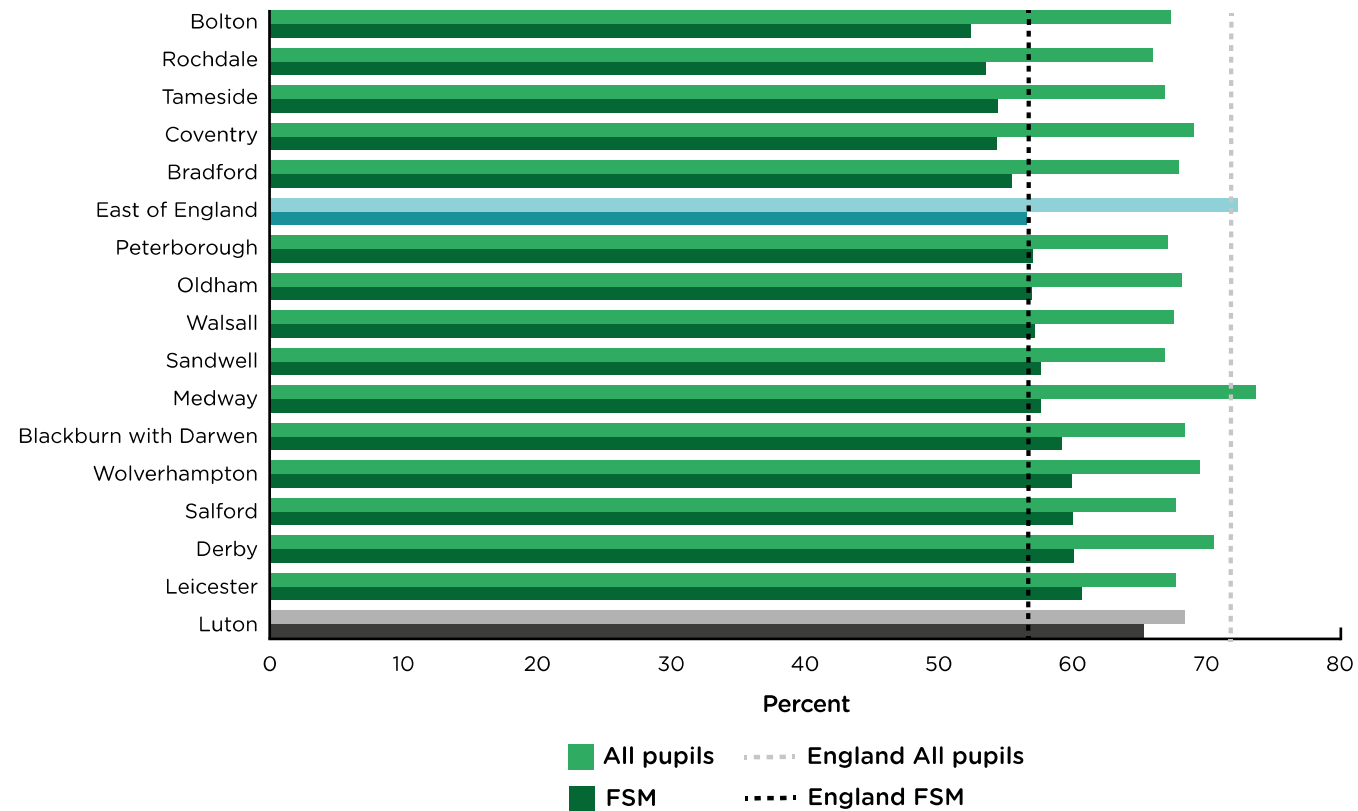


Source: DWP, 2021 (11)

Notes: A relative low-income family is defined as a family whose equivalised income is below 60% of contemporary median income. The gross income measure is Before Housing Costs (BHC) and includes contributions from earnings, state support and pensions. Income is equivalised to adjust for household size and family composition. Only families to have claimed Child Benefit and at least one other household benefit (Universal Credit, Tax Credit or Housing Benefit) are included in the statistics.

Percent of children school ready by free school eligibility, Luton and its statistical neighbours

Figure 3.6. Percent of children of school ready by free school eligibility, Luton and its statistical neighbours, 2018

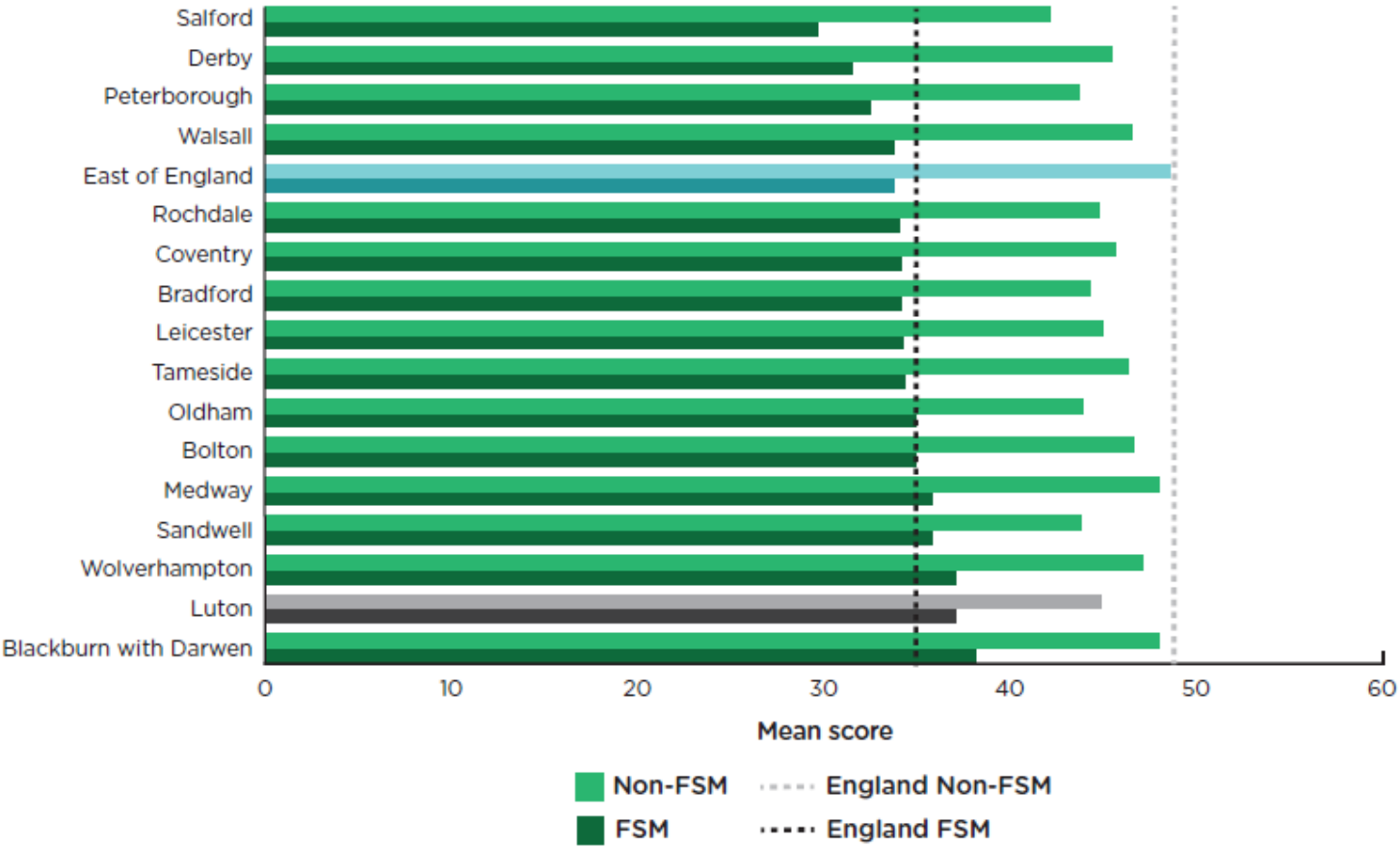


Source: OHID, 2021 (69)

Note: Children are regarded as school ready if they achieve a good level of development at the end of Reception. The areas have been ranked by the percent of children eligible for free school meals (FSM) who were school ready.

Average attainment 8 score by eligibility for free school meals, Luton and statistical neighbours

Figure 6. Average Attainment 8 score by eligibility for free school meals (FSM), Luton and statistical neighbours, 2018/19.

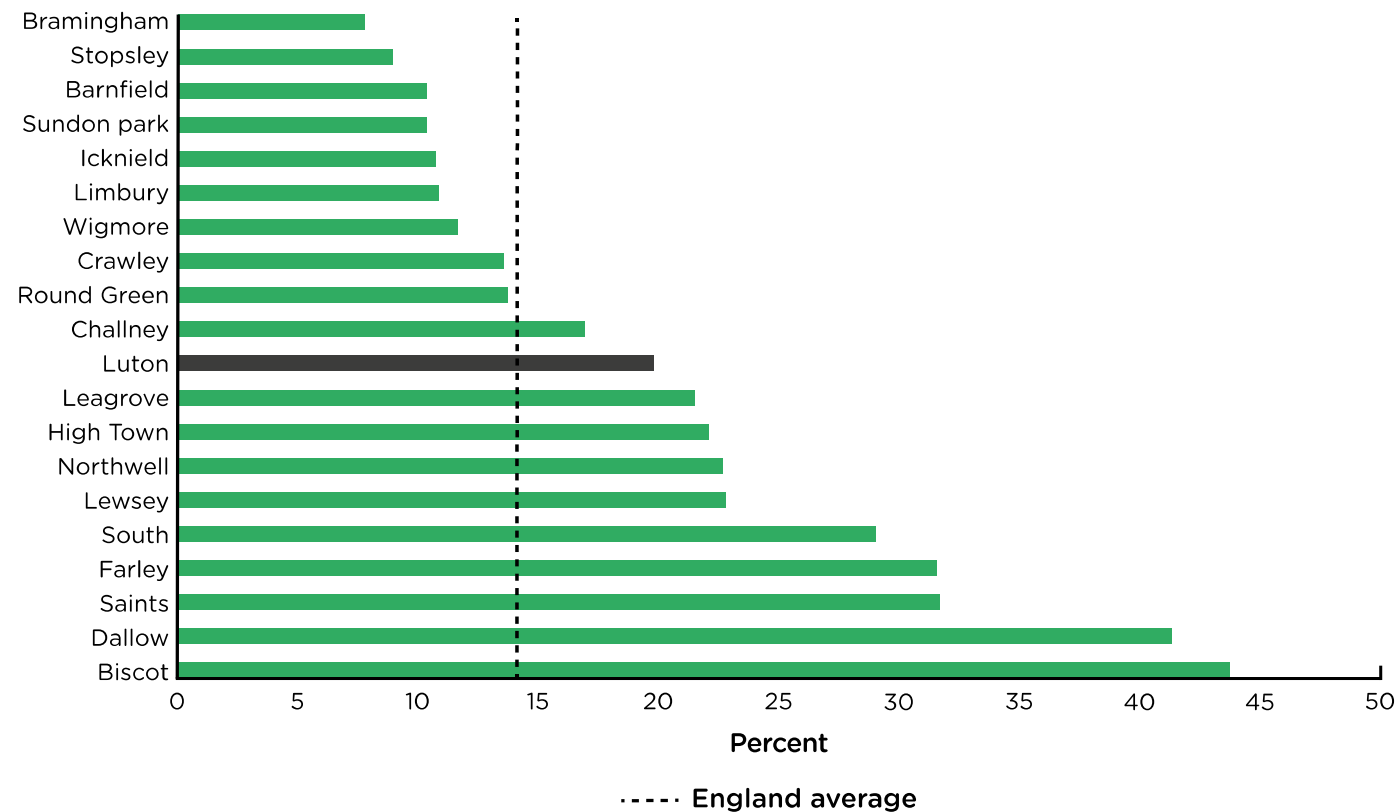


Source: DfE, 2020 (12)

Notes: Local authority ranked by attainment of free school meal eligible children

Percent of older people in Luton wards who are income deprived 2019

Figure 3.21. Percent of older people in Luton wards who are income deprived, 2019

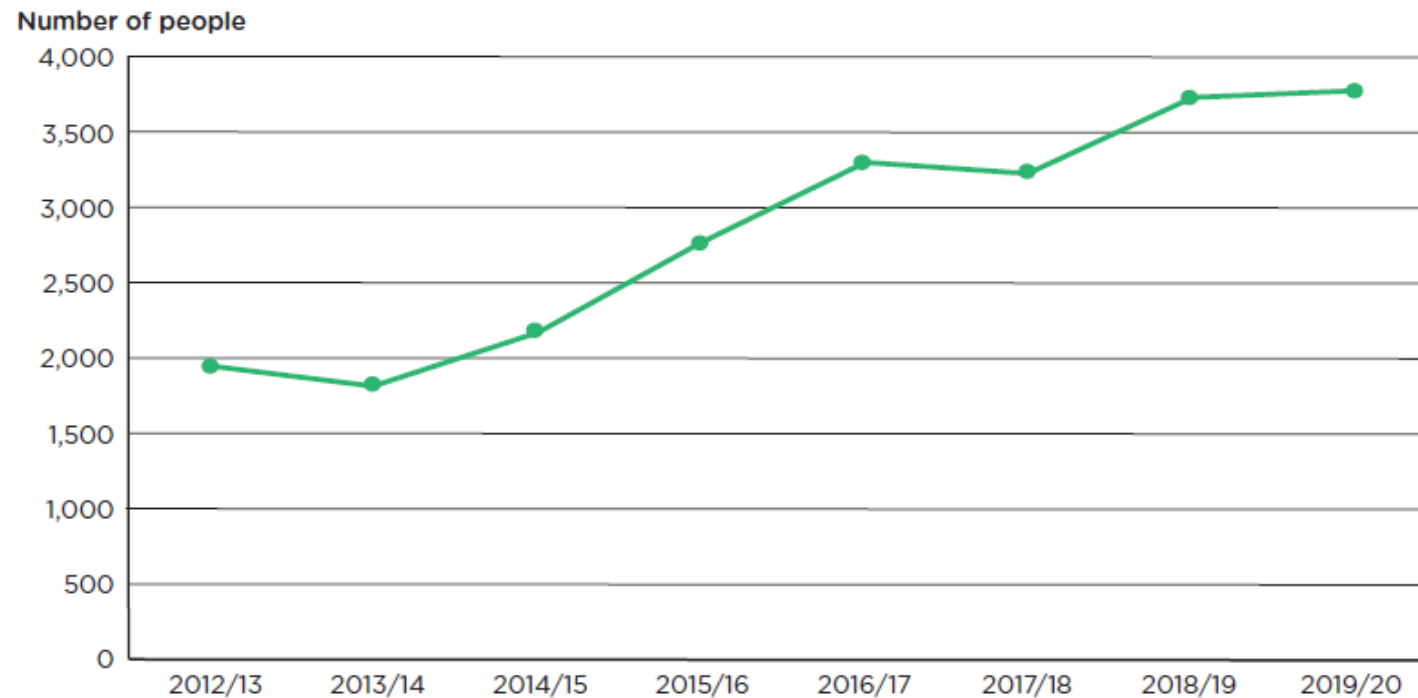


Source: MHCLG/DLUHC, 2019 (98)

Note: Figures from the Income Deprivation Affecting Older People Index (IDAOPI).

Number of people living in Luton occupying insanitary or overcrowded housing or otherwise living in unsatisfactory housing conditions

Figure 9. Number of people living in Luton occupying insanitary or overcrowded housing or otherwise living in unsatisfactory housing conditions, 2012/13 - 2019/20



Source: MHCLG/DLUHC, 2020 (15)

The Health Equity System

- Local Government
- Health Care – Trusts, primary care, ICS.
- The VCFSE sector
- Public services
- Business and the private sector

Places –30 + local authorities

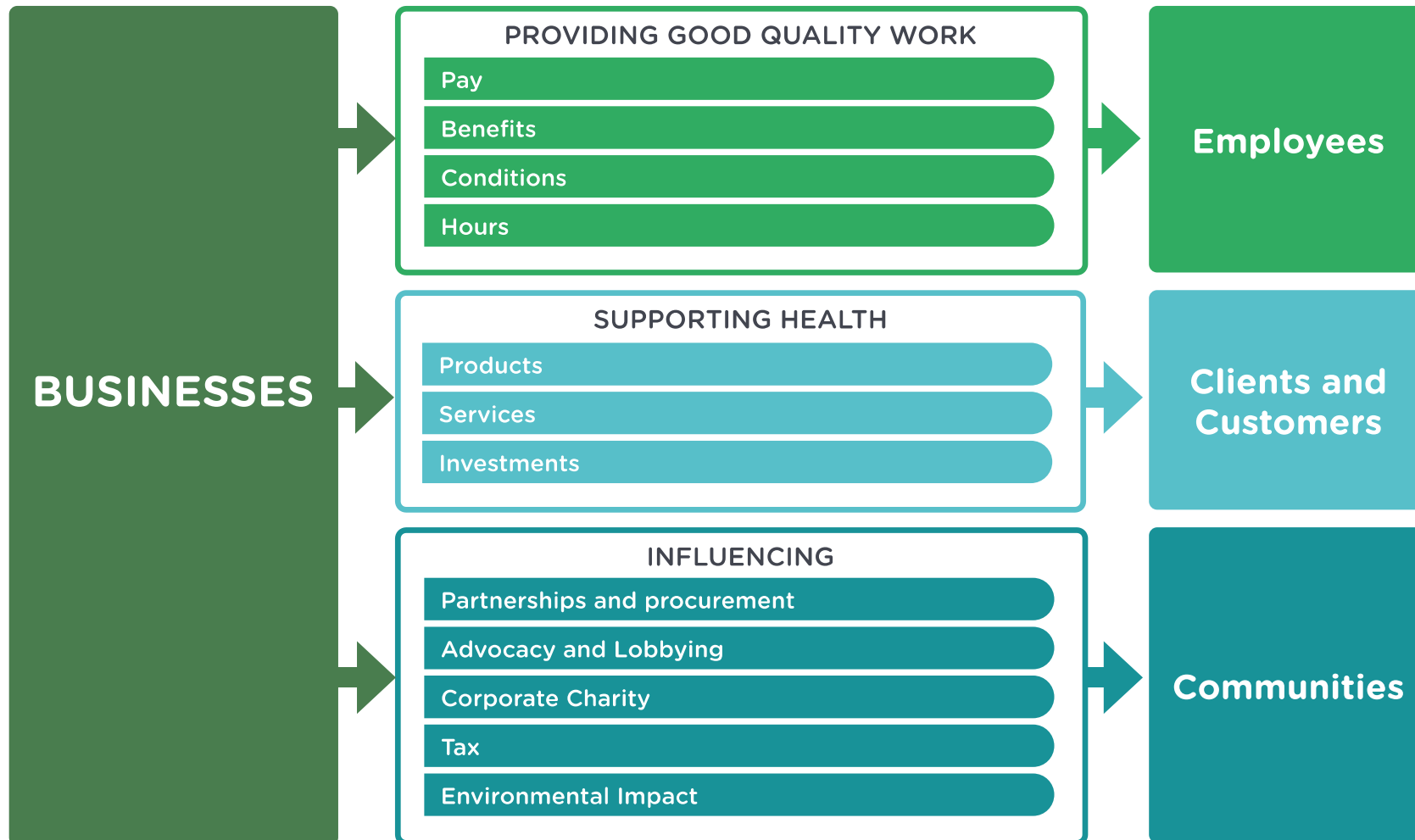
- Coventry
- Greater Manchester
- Cheshire and Merseyside
- Lancashire and Cumbria
- Luton
- Waltham Forest
- Gwent
- South west region
- Leeds

TBC

- North of Tyne
- Kent/Medway

The IHE framework for better business

Figure 4.4. The IHE framework for better business



Supporting businesses to create healthy, inclusive workplaces



For more information, please contact:

Lisa Young on 024 7697 7958

email: lisa.young@coventry.gov.uk

www.coventry.gov.uk/coventrybusinesses



Businesses committed to a fairer
Coventry

- Campaign with local Coventry businesses
- **Aim:** to get businesses to think about their part to play in reducing Health Inequalities in Coventry
- **How:** by looking at the issues they face, and offering suggestions that may help

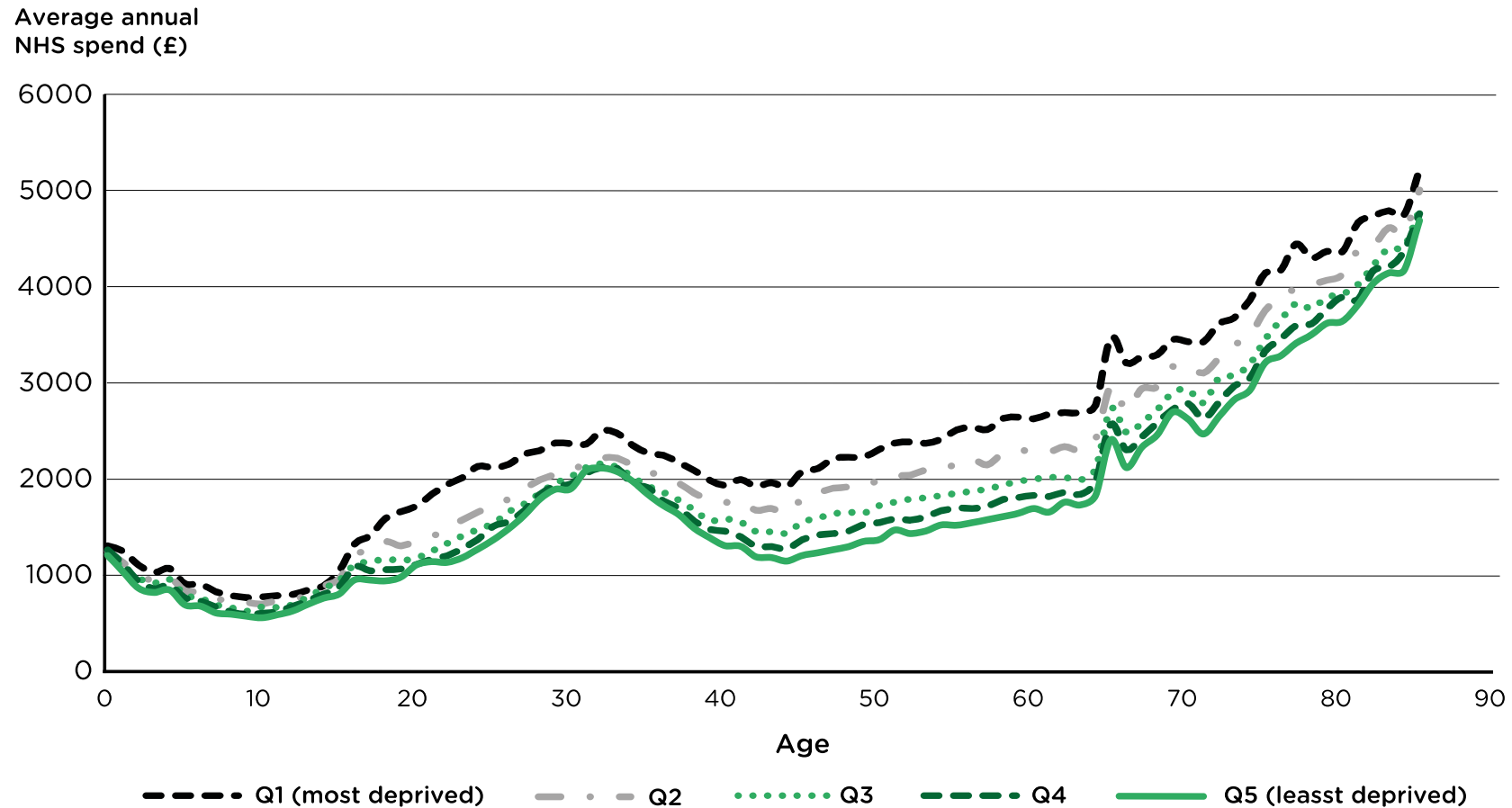
Hidden workers



- Legal and general improving conditions for their hidden workforce
- Working across city to get companies on to do the same
 - Price Waterhouse Cooper
 - Grosvenor Hotel
- Sick pay
 - Launch coalition for fairer sick pay conditions autumn 2023

Average annual NHS spend by age and neighbourhood deprivation quintile group for males in England, 2011/12

Figure 4.3b. Average annual NHS spend by age and neighbourhood deprivation quintile group for males in England, 2011/12



The Health Equity System – Health equity in all policies and sectors

- Local Government
- Health Care – Trusts, primary care, ICS.
- The VCFSE sector
- Public services
- Business and the private sector