

This information is issued by:

**Business Intelligence, Luton Borough Council**

You can contact us in the following ways: [Edward.holmes@luton.gov.uk](mailto:Edward.holmes@luton.gov.uk)

By telephone: **+44 1582 54 7093**

Visit our information observatory: [Information Observatory](#)

Visit our Council website: [www.luton.gov.uk](http://www.luton.gov.uk)

# Luton 2017 Mid-Year Population Estimates

## Executive Summary

- According to the latest data from the Office for National Statistics, Luton's population is now 214,700, which fell by 1,200 between 2016 and 2017, the population rose nationally.
- The population fall was driven by an increase of migration out of Luton to other parts of the UK and a slowing of international migration.
- The population of Luton had previously risen by 12,300 since the 2011 Census.
- Luton has a younger population than the national average.
- The birth rate in Luton has remained at a similar level for a number of years. There was an increase in the number of deaths between 2016 and 2017 both locally and nationally.

**Table 1: Luton & UK Mid-Year Population Estimates 2013-2017**

Year	Luton Population	Annual Change	Growth	UK Population	UK Change	UK Growth
2013	207,400			64,105,700		
2014	210,200	2,800	1.4%	64,596,800	491,100	0.8%
2015	213,600	3,400	1.6%	65,110,000	513,200	0.8%
2016	215,900	2,300	1.1%	65,648,100	538,100	0.8%
2017	214,700	-1,200	-0.6%	66,040,200	392,100	0.6%
2012-16		7,300	3.5%		1,934,500	3.0%

Source: Office for National Statistics

**Table 2: Luton Population Components of Change 2013-2017**

Components of Change	Births	Deaths	Natural Change	Internal Migration In	Internal Migration Out
2013-14	3,500	1,300	2,200	8,900	10,800
2014-15	3,500	1,500	2,000	9,000	10,600
2015-16	3,600	1,400	2,200	8,400	11,200
2016-17	3,600	1,500	2,000	8,500	13,900
Components of Change	Net Internal Migration	International Migration In	International Migration Out	International Migration Net	Net Migration
2013-14	-1,900	3,600	1,200	2,500	600
2014-15	-1,900	4,200	1,200	3,000	1,100
2015-16	-1,600	4,700	1,700	2,900	1,300
2016-17	-2,800	3,800	1,800	2,100	-700

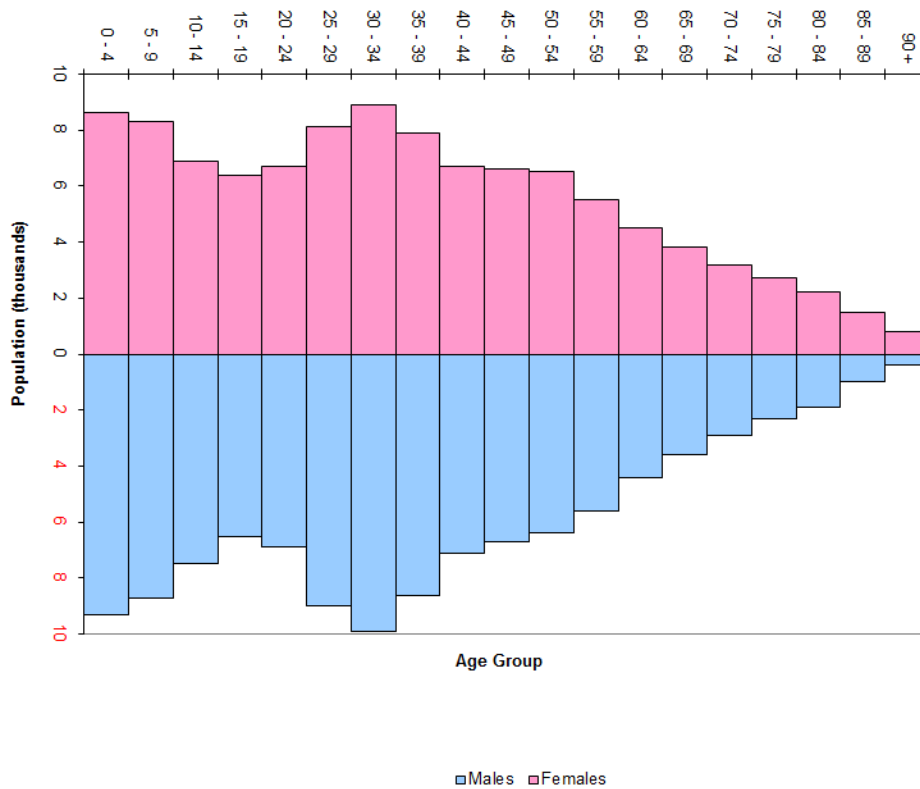
Source: Office for National Statistics

**Table 3: Luton Population by Quinary Age Group, 2017**

All ages	Male	Female	Total	Luton % Population	UK % Population
0 – 4	9,300	8,600	17,800	8.3%	6.0%
5 – 9	8,700	8,300	17,000	7.9%	6.2%
10 – 14	7,500	6,900	14,400	6.7%	5.7%
15 – 19	6,500	6,400	12,900	6.0%	5.6%
20 – 24	6,900	6,700	13,600	6.3%	6.4%
25 – 29	9,000	8,100	17,100	8.0%	6.9%
30 – 34	9,900	8,900	18,900	8.8%	6.7%
35 – 39	8,600	7,900	16,500	7.7%	6.5%
40 – 44	7,100	6,700	13,700	6.4%	6.1%
45 – 49	6,700	6,600	13,300	6.2%	6.9%
50 – 54	6,400	6,500	13,000	6.1%	7.1%
55 – 59	5,600	5,500	11,200	5.2%	6.3%
60 – 64	4,400	4,500	8,900	4.1%	5.4%
65 – 69	3,600	3,800	7,500	3.5%	5.3%
70 – 74	2,900	3,200	6,100	2.8%	4.7%
75 – 79	2,300	2,700	5,000	2.3%	3.3%
80 – 84	1,900	2,200	4,100	1.9%	2.5%
85 – 89	1,000	1,500	2,400	1.1%	1.5%
90 and over	400	800	1,200	0.6%	0.9%
<b>Total</b>	<b>108,900</b>	<b>105,800</b>	<b>214,700</b>		

Source: Office for National Statistics

**Chart 1: Luton Population 2017 by Quinary Age Group**



Source: Office for National Statistics

The 2017 Mid-year population estimates were published in June 2018 by the Office for National Statistics. Prior to the 2011 Census, Luton Borough Council considered that the ONS were under-estimating the population of Luton through evidence from local administrative data-sets. Since the 2011 Census the estimates have improved but the Business Intelligence team will be using administrative data to quality assure the estimates and test whether they are fully capturing the demographics of Luton.

A link to the data can be found in the following link: [Population](#)

*For further information on this topic, contact the Business Intelligence Team at:  
Research.Intelligence@luton.gov.uk*