

Research and Geospatial Information

Ward & Small Area Population Estimates

November 2012

2011 Census: Ward & Small Area Population Estimates

Ward and Output Area population estimates from the 2011 Census were published on 23rd November.

Table 1: Ward Population Comparison Between 2011 and 2001 Census

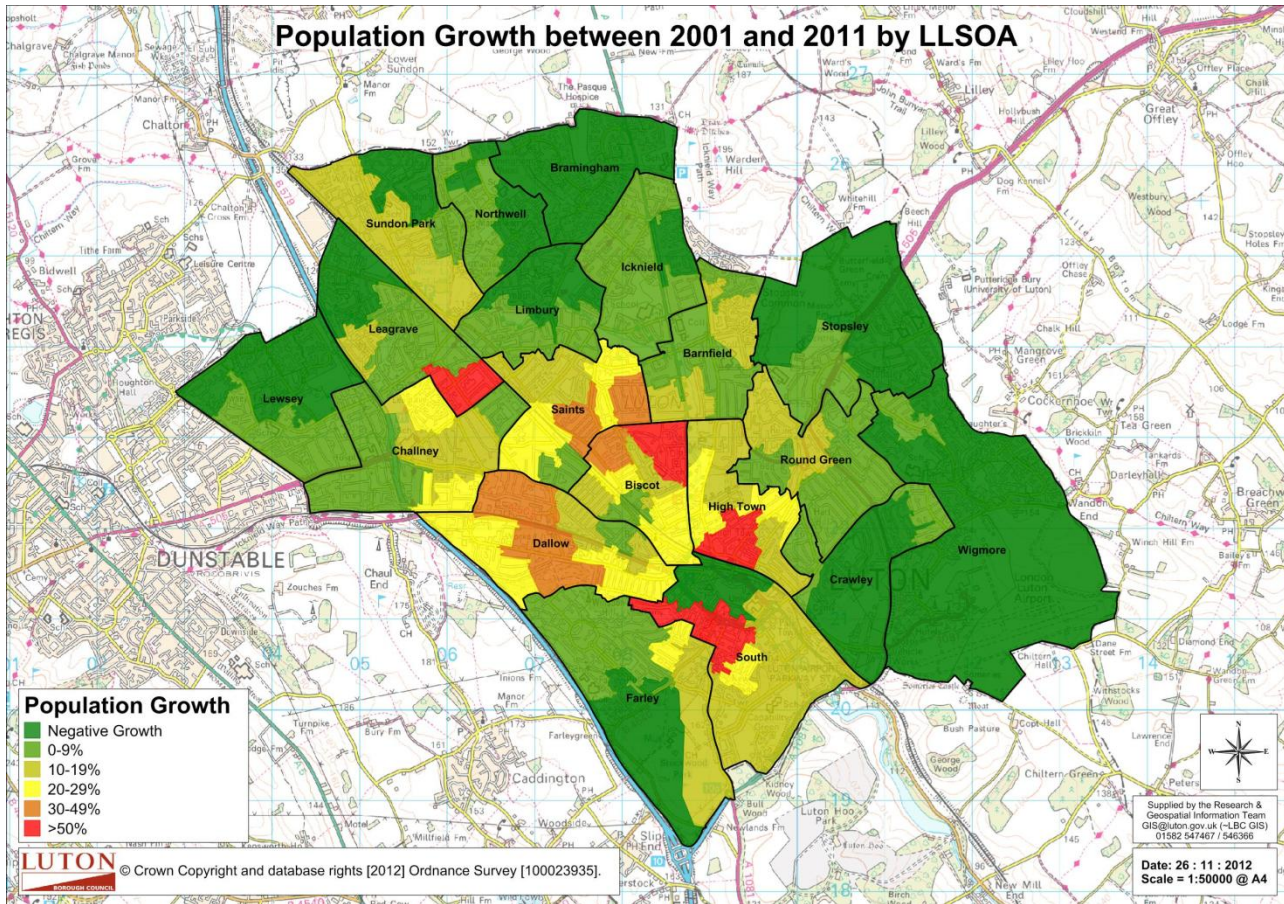
	2011 Ward Population	2001 Ward Population	Population Change	Percentage Change
Barnfield	7,736	7,035	701	10.0%
Biscot	16,118	12,950	3,168	24.5%
Bramingham	7,207	7,579	-372	-4.9%
Challney	13,470	11,820	1,650	14.0%
Crawley	7,070	7,124	-54	-0.8%
Dallow	16,393	13,155	3,238	24.6%
Farley	11,996	10,986	1,010	9.2%
High Town	9,046	7,076	1,970	27.8%
Icknield	7,629	7,546	83	1.1%
Leagrave	11,998	11,182	816	7.3%
Lewsey	12,519	12,662	-143	-1.1%
Limbury	7,904	7,677	227	3.0%
Northwell	8,153	8,247	-94	-1.1%
Round Green	11,623	10,872	751	6.9%
Saints	14,382	11,716	2,666	22.8%
South	13,987	10,367	3,620	34.9%
Stopsley	7,021	7,106	-85	-1.2%
Sundon Park	7,949	7,574	375	5.0%
Wigmore	11,000	11,683	-683	-5.8%
Total	203,201	184,357	18,844	10.2%

Source: Census 2011 & Census 2001, Office for National Statistics

Table 1 shows that South ward had the highest population growth between the 2001 and 2011 Census. The population rose from 10,367 in 2001 to 13,987 in 2011, a rise of 35%. High Town's population rose from 7,076 to 9,046, a rise of 28%. Both Biscot and Dallow wards' population rose by a quarter, with a rise from 12,950 to 16,188 in Biscot and 13,155 to 16,393 in Dallow. Saints ward's population rose from 11,716 to 14,382, a rise of 23%.

Bramingham ward had a small population fall from 7,259 to 7,207, a fall of 5%.

Map 1: Population Growth Between 2001 and 2011 Census



Data Source: 2011 and 2001 Census, Office for National Statistics

Map 1 shows which Lower Layer Super Output Areas (LSOA) had the strongest population growth. LSOAs in South, High Town, Biscot and Leagrave wards had population growth of more than 50% between 2001 and 2011.

For more information on this topic contact Research & Geospatial Information via Research.Intelligence@luton.gov.uk

