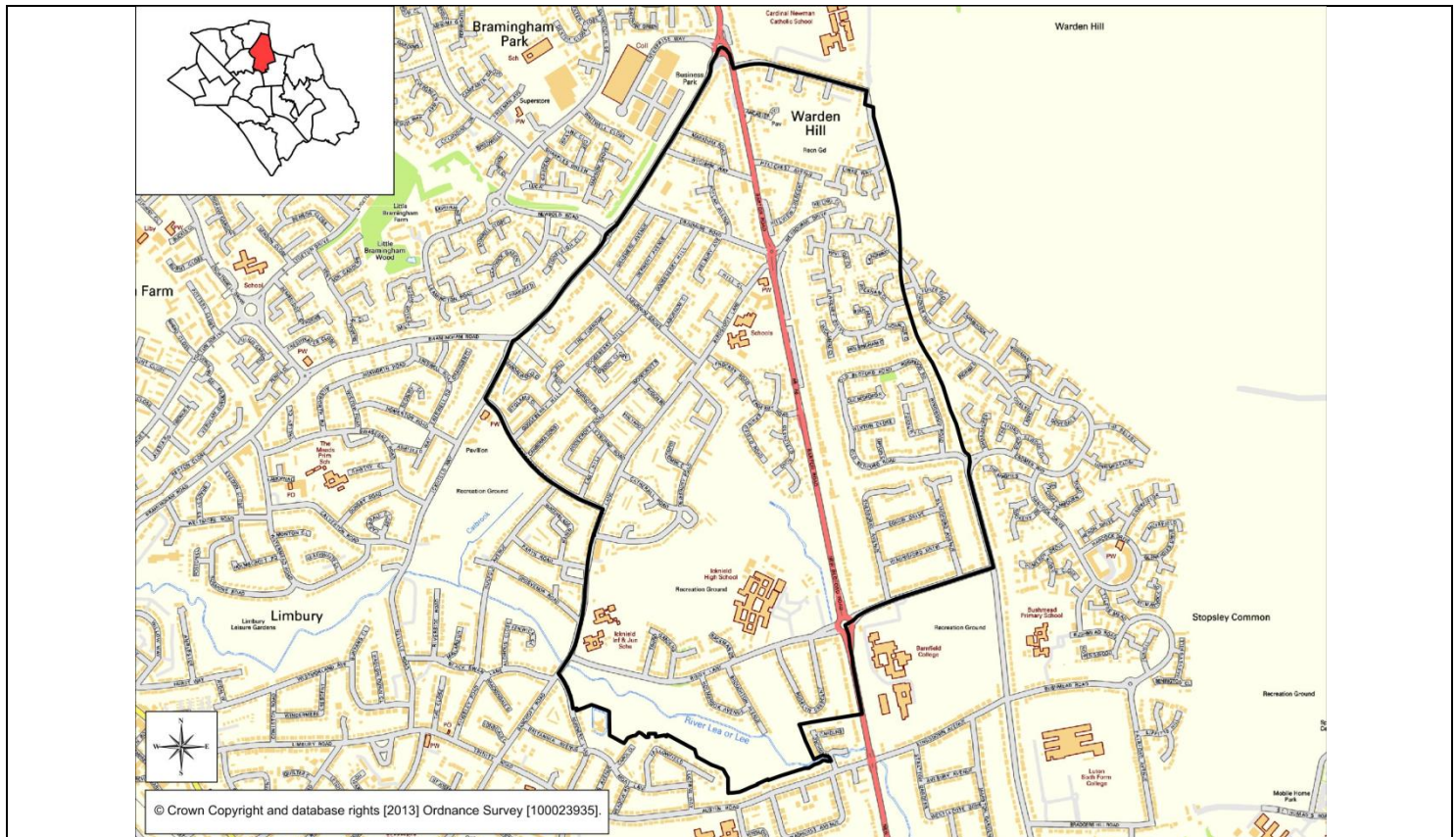




ICKNIELD WARD PROFILE 2011 CENSUS DATA

2011 CENSUS POPULATION FOR ICKNIELD WARD:	7,629
2001 Census	7,556
2001-2011 % Change	+1.0%
Persons in Households	7,549
Persons in Communal Establishments	80

RESIDENT POPULATION	Ickniel	Luton	England & Wales
Population Density	41.0	46.9	3.7
Average Household Size			
Male Residents	48.3%	50.2%	49.2%
Female Residents	51.7%	49.8%	50.8%
Occupancy Rating <-2		5.6	2.3



MIGRATION	
Residents who, since one year before	
~ Moved into Luton from Within UK	
~ Moved into Luton from outside UK	
~ Moved Within Luton	
~ Moved Out of Luton (outflow)	

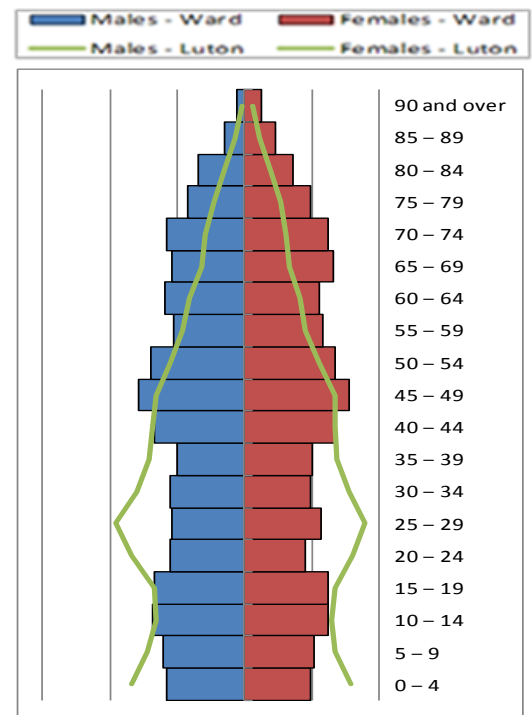
ETHNICITY	% Ickniel
White	68.4%
Mixed	3.8%
Asian	20.5%
Black	6.1%
Other	1.2%

AGE	% Ickniel
0 – 4	5.3%
5 – 15	13.2%
16 – 24	10.3%
25 – 74	60.3%
75+	10.8%

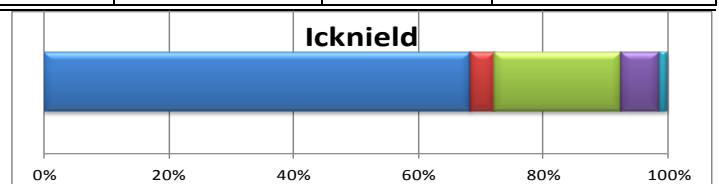
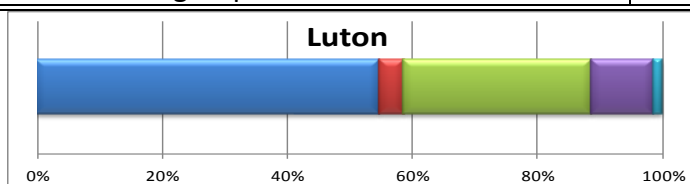
2011 CENSUS – ICKNIELD WARD PROFILE

RESIDENT POPULATION AGE AND ETHNICITY. % CHANGE FIGURES ARE BETWEEN 2001 AND 2011 CENSUS FOR ICKNIELD WARD ONLY.

AGE	No. Icknield	% Icknield	% Luton	% England & Wales	% Change 2001 -2011
0 – 4	403	5.3%	8.2%	6.2%	-2.7%
5 – 7	246	3.2%	4.3%	3.4%	-5.7%
8 – 9	179	2.3%	2.7%	2.2%	-19.0%
10 – 14	496	6.5%	6.5%	5.8%	1.0%
15	89	1.2%	1.3%	1.2%	-2.2%
16 – 17	223	2.9%	2.7%	2.5%	13.8%
18 – 19	180	2.4%	2.7%	2.6%	3.4%
20 – 24	380	5.0%	8.2%	6.8%	0.8%
25 – 29	423	5.5%	9.3%	6.8%	31.0%
30 – 44	1,293	16.9%	21.6%	20.5%	-14.2%
45 – 59	1,538	20.2%	16.7%	19.4%	-3.3%
60 – 64	433	5.7%	4.1%	6.0%	-11.8%
65 – 74	917	12.0%	6.2%	8.7%	11.4%
75 – 84	614	8.0%	4.2%	5.6%	35.5%
85 – 89	146	1.9%	0.9%	1.5%	44.6%
90 +	69	0.9%	0.5%	0.8%	60.5%



ETHNICITY – all residents	Number - Icknield	% Icknield	% Luton	% England and Wales
White: English/Welsh/Scottish/N. Irish/British	4,666	61.2%	44.6%	80.5%
White: Irish	327	4.3%	3.0%	0.9%
White: Gypsy or Irish Traveller	0	0.0%	0.1%	0.1%
White: Other White	229	3.0%	7.0%	4.4%
Mixed/multiple: White & Black Caribbean	136	1.8%	1.9%	0.8%
Mixed/multiple: White & Black African	22	0.3%	0.5%	0.3%
Mixed/multiple: White and Asian	74	1.0%	0.9%	0.6%
Mixed/multiple: Other Mixed	60	0.8%	0.9%	0.5%
Asian/Asian British: Indian	620	8.1%	5.2%	2.5%
Asian/Asian British: Pakistani	458	6.0%	14.4%	2.0%
Asian/Asian British: Bangladeshi	287	3.8%	6.7%	0.8%
Asian/Asian British: Chinese	43	0.6%	0.7%	0.7%
Asian/Asian British: Other Asian	153	2.0%	2.9%	1.5%
Black: African	163	2.1%	4.5%	1.8%
Black: Caribbean	255	3.3%	4.0%	1.1%
Black: Other Black	46	0.6%	1.3%	0.5%
Other ethnic group: Arab	38	0.5%	0.8%	0.4%
Other ethnic group: Other	52	0.7%	0.7%	0.6%



■ White
 ■ Mixed/multiple ethnic groups
 ■ Asian/Asian British
 ■ Black/African/Caribbean/Black British
 ■ Other ethnic group

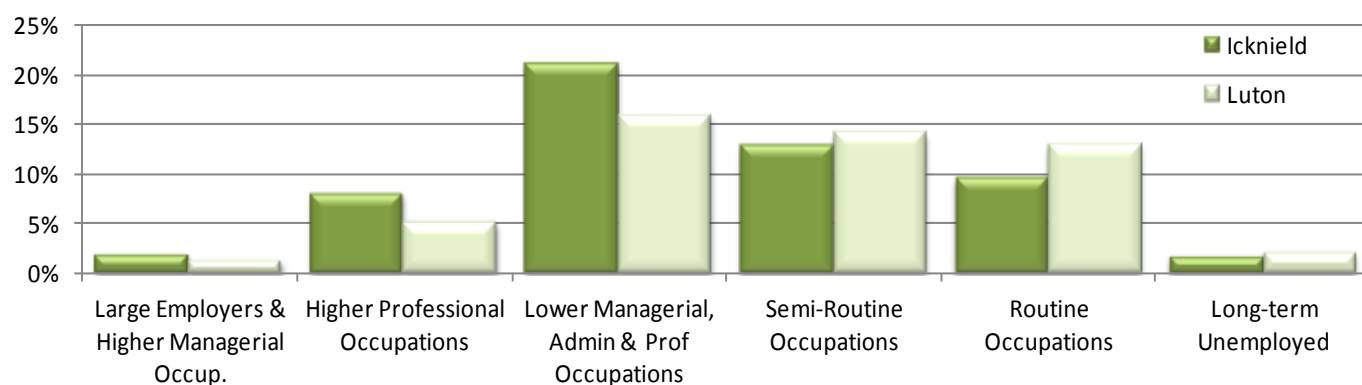
2011 CENSUS – ICKNIELD WARD PROFILE

RESIDENT POPULATION LANGUAGE, RELIGION AND SOCIO-ECONOMIC STATUS. % CHANGE FIGURES ARE BETWEEN 2001 AND 2011 CENSUS FOR ICKNIELD WARD ONLY.

HOUSEHOLD LANGUAGE – all households	% Icknield	% Luton	% England and Wales
<i>Proportion of people in household with English as Main Language:</i>			
~ All people aged 16+	88.9%	75.9%	91.2%
~ At least 1 but not all people aged 16+	6.0%	10.6%	3.7%
~ No people 16+ but at least 1 person aged 3-15	1.0%	2.3%	0.8%
~ No people in household have English as a main language	4.1%	11.3%	4.3%

RELIGION – all residents	Number – Icknield	% Icknield	% Luton	% England and Wales	% Change 2001 -2011
Christian	4,377	57.4%	47.4%	59.3%	-17.1%
Buddhist	12	0.2%	0.3%	0.4%	50.0%
Hindu	402	5.3%	3.3%	1.5%	43.1%
Jewish	17	0.2%	0.2%	0.5%	-32.0%
Muslim (Islam)	905	11.9%	24.6%	4.8%	207.8%
Sikh	172	2.3%	1.2%	0.8%	57.8%
Other religion	54	0.7%	0.4%	0.4%	35.0%
No religion	1,189	15.6%	16.5%	25.1%	28.4%
Religion Not Stated	501	6.6%	6.1%	7.2%	-15.2%

SOCIO-ECONOMIC CLASSIFICATION – all residents aged 16-74	% Icknield	% Luton	% England and Wales	% Change 2001 – 2011
Large Employers & Higher Managerial Occup.	2.0%	1.3%	2.4%	-49.8%
Higher Professional Occupations	8.1%	5.1%	7.9%	-57.0%
Lower Managerial & Professional Occupations	21.2%	15.9%	20.8%	8.0%
Intermediate Occupations	15.1%	12.2%	12.7%	34.0%
Small Employers & Own Account Workers	9.9%	8.8%	9.4%	37.1%
Lower Supervisory & Technical Occupations	7.4%	7.1%	6.9%	-7.5%
Semi-Routine Occupations	12.9%	14.1%	14.1%	13.9%
Routine Occupations	9.6%	13.0%	11.1%	37.5%
Never Worked	3.8%	7.7%	3.9%	83.0%
Long-Term Unemployed	1.7%	2.2%	1.7%	122.0%
Full Time Students	8.3%	12.6%	9.0%	39.7%
Not Classifiable	0.0%	0.0%	0.0%	-100.0%



2011 CENSUS – ICKNIELD WARD PROFILE

RESIDENT POPULATION. UNEMPLOYMENT AND ECONOMIC ACTIVITY AND QUALIFICATIONS. % CHANGE FIGURES ARE BETWEEN 2001 AND 2011 CENSUS FOR ICKNIELD WARD ONLY.

UNEMPLOYED– all unemployed residents who:	Number – Icknield	% Icknield	% Luton	% England and Wales	% Change 2001- 2011
Are Aged 16 – 24 years	43	0.8%	1.4%	1.2%	53.6%
Are Aged 50 – 74	38	0.7%	0.9%	0.8%	18.8%
Have Never Worked	22	0.4%	1.1%	0.7%	120.0%
Are Long Term Unemployed	91	1.7%	2.2%	1.7%	122.0%

ECONOMIC POSITION – all residents aged 16-74	Number – Icknield	% Icknield	% Luton	% England and Wales	% Change 2001 -2011
<i>Economically Active:</i>	3,651	67.8%	69.1%	69.7%	-1.2%
~ Full Time Employed	1,983	36.8%	36.7%	38.5%	-12.2%
~ Part Time Employed	746	13.8%	12.7%	13.7%	8.1%
~ Self Employed	547	10.2%	8.4%	9.7%	18.4%
~ Full Time Student	181	3.4%	5.5%	3.4%	24.8%
~ Unemployed	194	3.6%	5.7%	4.4%	40.6%
<i>Economically Inactive:</i>	1,736	32.2%	30.9%	30.3%	-1.5%
~ Students	282	5.2%	7.4%	5.8%	54.1%
~ Long Term Sick/Disabled	169	3.1%	3.8%	4.2%	-12.9%
~ Looking After Home/Family	219	4.1%	6.7%	4.3%	-26.8%
~ Retired	956	17.7%	9.9%	13.8%	-1.7%
~ Other Inactive	110	2.0%	3.3%	2.2%	-20.3%

QUALIFICATIONS – highest level, all residents aged 16+	Number – Icknield	% Icknield	% Luton	% England and Wales
No Qualifications	1,442	23.2%	23.6%	22.7%
Level 1	827	13.3%	14.6%	13.3%
Level 2	926	14.9%	14.5%	15.3%
Apprenticeship	309	5.0%	3.3%	3.6%
Level 3	680	10.9%	11.1%	12.3%
Level 4 plus	1,589	25.6%	22.3%	27.2%
Other/Level Unknown	443	7.1%	10.7%	5.7%

No Qualifications: No academic or professional qualifications

Level 1 qualifications: 1-4 O Levels/CSE/GCSEs (any grades), Entry Level, Foundation Diploma, NVQ level 1, Foundation GNVQ, Basic/Essential Skills

Level 2 qualifications: 5+ O Level (Passes)/CSEs (Grade 1)/GCSEs (Grades A*-C), School Certificate, 1 A Level/ 2-3 AS Levels/VCEs, Intermediate/Higher Diploma, Welsh Baccaulaureate Intermediate Diploma, NVQ level 2, Intermediate GNVQ, City and Guilds Craft, BTEC First/General Diploma, RSA Diploma

Apprenticeship

Level 3 qualifications: 2+ A Levels/VCEs, 4+ AS Levels, Higher School Certificate, Progression/Advanced Diploma, Welsh Baccaulaureate Advanced Diploma, NVQ Level 3; Advanced GNVQ, City and Guilds Advanced Craft, ONC, OND, BTEC National, RSA Advanced Diploma

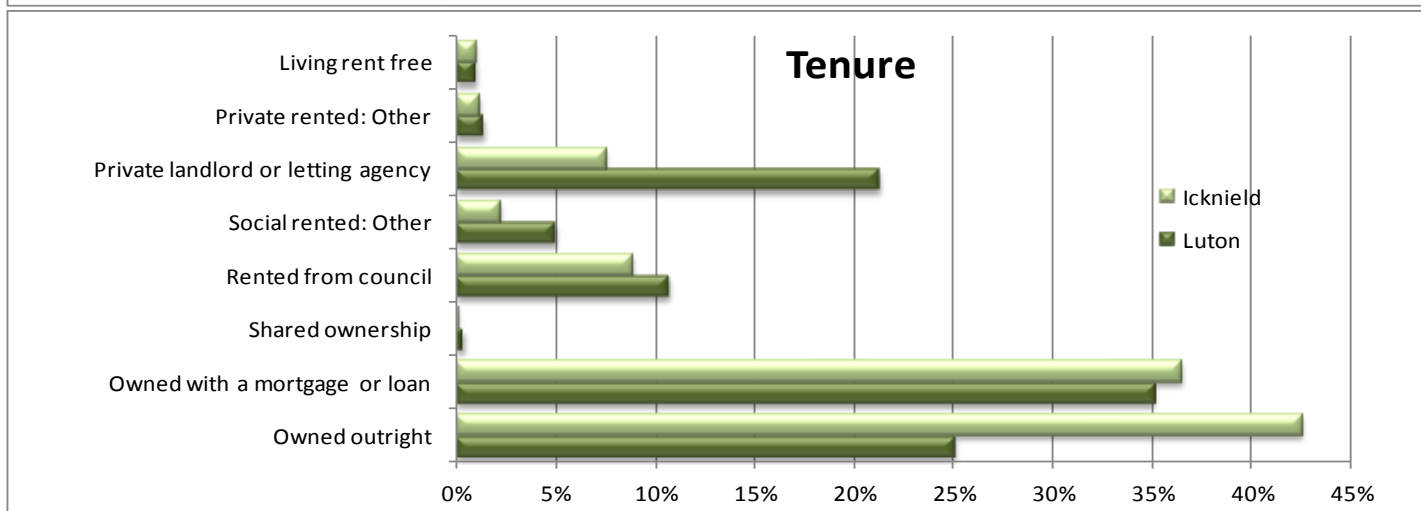
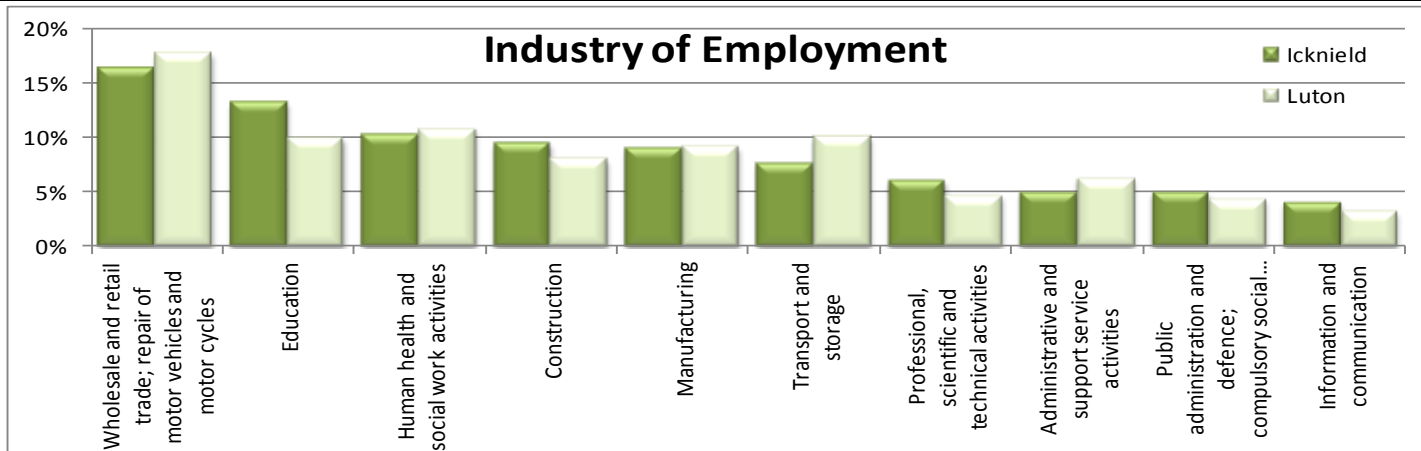
Level 4+ qualifications: Degree (for example BA, BSc), Higher Degree (for example MA, PhD, PGCE), NVQ Level 4-5, HNC, HND, RSA Higher Diploma, BTEC Higher level, Foundation degree (NI), Professional qualifications (for example teaching, nursing, accountancy)

Other qualifications: Vocational/Work-related Qualifications, Foreign Qualifications (Not stated/ level unknown).

2011 CENSUS – ICKNIELD WARD PROFILE

RESIDENT POPULATION. EMPLOYMENT BY INDUSTRY. % CHANGE FIGURES ARE BETWEEN 2001 AND 2011 CENSUS FOR ICKNIELD WARD ONLY.

EMPLOYMENT BY INDUSTRY – all residents aged 16-74 in employment	% Icknield	% Luton	% England and Wales
Agriculture, forestry and fishing	0.0%	0.1%	0.9%
Mining and quarrying	0.1%	0.0%	0.2%
Manufacturing	9.1%	9.2%	8.9%
Electricity, gas, steam & air conditioning supply	0.2%	0.2%	0.6%
Water supply; sewerage/waste management & remediation	0.3%	0.6%	0.7%
Construction	9.5%	8.1%	7.7%
Wholesale/retail trade; repair of motor vehicles & motor cycles	16.4%	17.8%	15.9%
Transport and storage	7.7%	10.1%	5.0%
Accommodation and food service activities	4.0%	6.1%	5.6%
Information and communication	4.1%	3.3%	4.0%
Financial and insurance activities	3.4%	2.6%	4.3%
Real estate activities	1.6%	1.5%	1.4%
Professional, scientific and technical activities	6.1%	4.7%	6.6%
Administrative and support service activities	5.0%	6.3%	4.9%
Public administration and defence; compulsory social security	5.0%	4.4%	6.0%
Education	13.3%	10.0%	9.9%
Human health and social work activities	10.4%	10.8%	12.5%
Other	3.9%	4.2%	5.0%



2011 CENSUS – ICKNIELD WARD PROFILE

RESIDENT POPULATION. HOUSEHOLDS, AMENITIES AND TENURE. % CHANGE FIGURES ARE BETWEEN 2001 AND 2011 CENSUS FOR ICKNIELD WARD ONLY.

HOUSEHOLD COMPOSITION – all households	Number – Icknield	% Icknield	% Luton	% England and Wales
All Households	3,027	100.0%	100.0%	100.0%
One Person Household: Aged 65 and over	444	14.7%	9.7%	12.4%
One Person Household: Other	402	13.3%	17.7%	17.8%
One Family Households:				
~ All aged 65 and over	407	13.4%	5.8%	8.2%
~ Married/same-sex civil p/ship: No children	348	11.5%	9.2%	12.3%
~ Married /same-sex civil p/ship: Dependent children	514	17.0%	18.3%	15.2%
~ Married/same-sex civil p/ship: Children non-dependent	233	7.7%	5.7%	5.6%
~ Cohabiting couple: No children	88	2.9%	4.1%	5.3%
~ Cohabiting couple: Dependent children	83	2.7%	3.6%	4.1%
~ Cohabiting couple: All children non-dependent	12	0.4%	0.4%	0.5%
~ Lone parent: Dependent children	170	5.6%	8.2%	7.2%
~ Lone parent: All children non-dependent	119	3.9%	3.8%	3.5%
Other household types: With dependent children	109	3.6%	6.0%	2.6%
Other Household Types: All full-time students	1	0.0%	1.2%	0.6%
Other Household Types: All aged 65 and over	7	0.2%	0.2%	0.3%
Other Household Types: Other	90	3.0%	6.0%	4.4%

TENURE – all households	Number – Icknield	% Icknield	% Luton	% England and Wales
All Households	3,027	100.0%	100.0%	100.0%
Owned: Owns outright	1,288	42.6%	25.1%	30.8%
Owned: Owns with a mortgage or loan	1,106	36.5%	35.1%	32.7%
Owned: Shared ownership	4	0.1%	0.4%	0.8%
Social rented: Rented from Council	268	8.9%	10.7%	9.4%
Social rented: Other social rented	68	2.2%	5.0%	8.2%
Private rented: Landlord or letting agency	227	7.5%	21.3%	15.3%
Private rented: Other	35	1.2%	1.4%	1.4%
Living rent free	31	1.0%	1.0%	1.4%

ACCOMMODATION TYPE – all households, unshared dwellings	% Icknield	% Luton	% England and Wales
<i>Whole house or bungalow:</i>			
~ Detached	33.8%	12.9%	22.7%
~ Semi-detached	45.2%	40.4%	31.3%
~ Terraced (inc end)	12.9%	25.0%	24.6%
<i>Flat, maisonette or apartment</i>			
~ Purpose-built block of flats or tenement	7.0%	17.7%	16.0%
~ Part of converted/shared house (inc bed-sits)	0.3%	2.6%	3.7%
In a commercial building	0.8%	0.8%	0.9%
Caravan/other mobile/temporary structure	0.0%	0.2%	0.4%