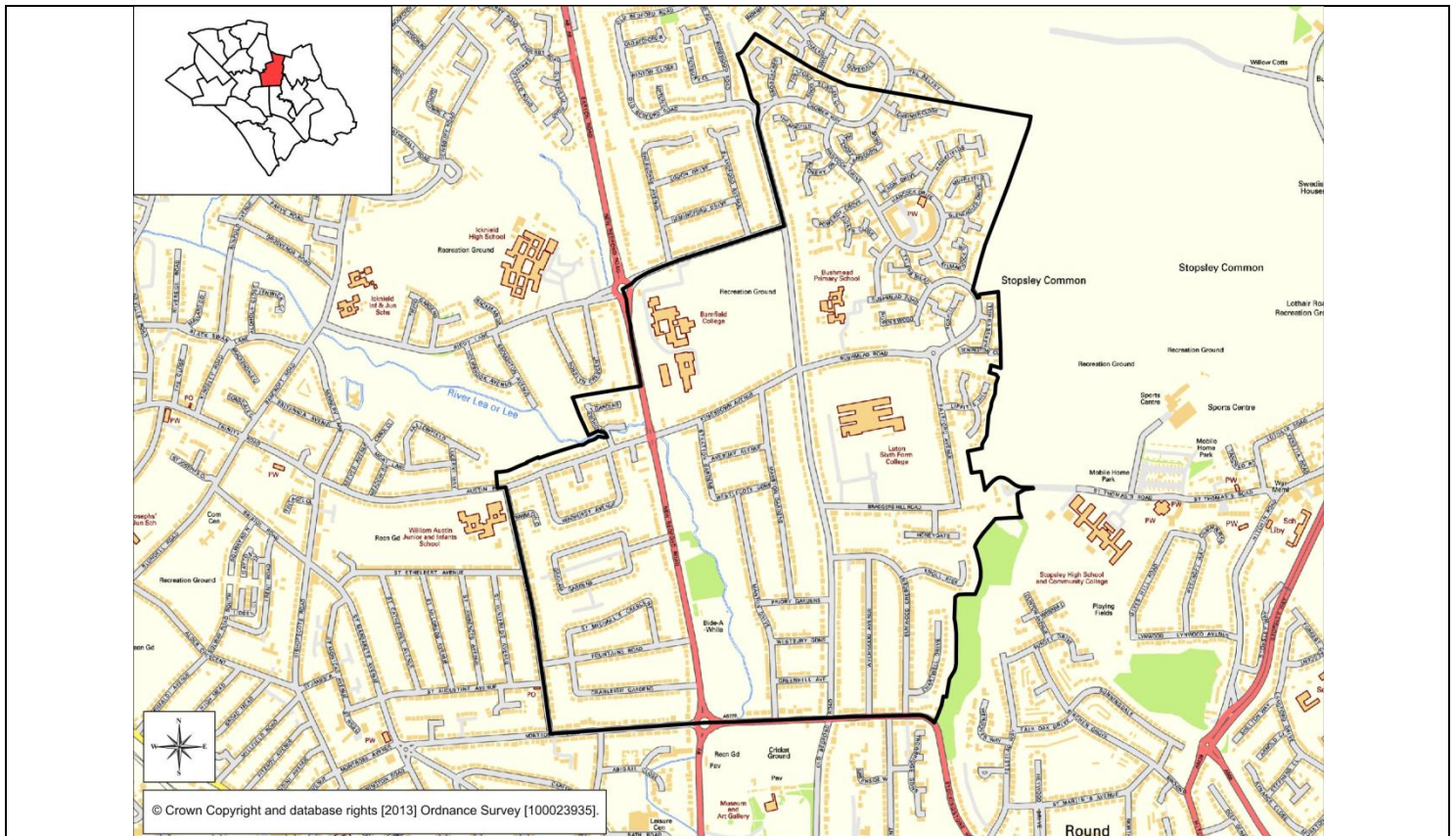




BARNFIELD WARD PROFILE 2011 CENSUS DATA

2011 CENSUS POPULATION FOR BARNFIELD WARD:	7,736
2001 Census	7,032
2001-2011 % Change	+10.0%
Persons in Households	7,676
Persons in Communal Establishments	60

RESIDENT POPULATION	Barnfield	Luton	England & Wales
Population Density	46.5	46.9	3.7
Average Household Size			
Male Residents	48.1%	50.2%	49.2%
Female Residents	51.9%	49.8%	50.8%
Occupancy Rating <-2		5.6	2.3



MIGRATION	
Residents who, since one year before	
~ Moved into Luton from Within UK	
~ Moved into Luton from outside UK	
~ Moved Within Luton	
~ Moved Out of Luton (outflow)	

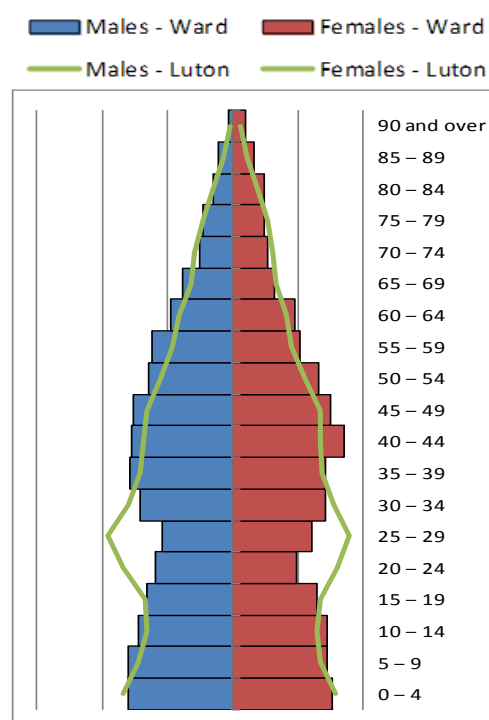
ETHNICITY	% Barnfield
White	59.8%
Mixed	4.6%
Asian	28.4%
Black	5.6%
Other	1.6%

AGE	% Barnfield
0 – 4	7.8%
5 – 15	16.4%
16 – 24	10.4%
25 – 74	59.0%
75+	6.4%

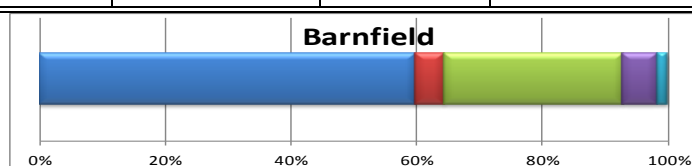
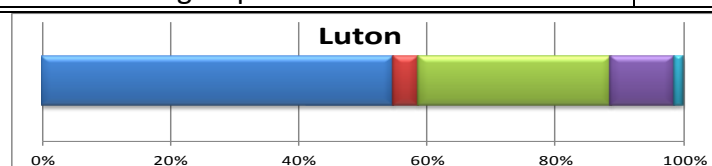
2011 CENSUS – BARNFIELD WARD PROFILE

RESIDENT POPULATION AGE AND ETHNICITY. % CHANGE FIGURES ARE BETWEEN 2001 AND 2011 CENSUS FOR BARNFIELD WARD ONLY.

AGE	Barnfield	% Barnfield	% Luton	% England & Wales	% Change 2001 -2011
0 – 4	603	7.8%	8.2%	6.2%	11.7%
5 – 7	339	4.4%	4.3%	3.4%	5.6%
8 – 9	251	3.2%	2.7%	2.2%	26.1%
10 – 14	561	7.3%	6.5%	5.8%	6.7%
15	118	1.5%	1.3%	1.2%	53.2%
16 – 17	223	2.9%	2.7%	2.5%	26.0%
18 – 19	164	2.1%	2.7%	2.6%	16.3%
20 – 24	421	5.4%	8.2%	6.8%	16.6%
25 – 29	442	5.7%	9.3%	6.8%	-1.1%
30 – 44	1,758	22.7%	21.6%	20.5%	-4.8%
45 – 59	1,530	19.8%	16.7%	19.4%	16.5%
60 – 64	367	4.7%	4.1%	6.0%	41.2%
65 – 74	470	6.1%	6.2%	8.7%	10.8%
75 – 84	330	4.3%	4.2%	5.6%	11.9%
85 – 89	105	1.4%	0.9%	1.5%	40.0%
90 +	54	0.7%	0.5%	0.8%	86.2%



ETHNICITY – all residents	Number - Barnfield	% Barnfield	% Luton	% England and Wales
White: English/Welsh/Scottish/N. Irish/British	4,141	53.5%	44.6%	80.5%
White: Irish	247	3.2%	3.0%	0.9%
White: Gypsy or Irish Traveller	3	0.0%	0.1%	0.1%
White: Other White	237	3.1%	7.0%	4.4%
Mixed/multiple: White & Black Caribbean	130	1.7%	1.9%	0.8%
Mixed/multiple: White & Black African	37	0.5%	0.5%	0.3%
Mixed/multiple: White and Asian	114	1.5%	0.9%	0.6%
Mixed/multiple: Other Mixed	71	0.9%	0.9%	0.5%
Asian/Asian British: Indian	717	9.3%	5.2%	2.5%
Asian/Asian British: Pakistani	857	11.1%	14.4%	2.0%
Asian/Asian British: Bangladeshi	386	5.0%	6.7%	0.8%
Asian/Asian British: Chinese	76	1.0%	0.7%	0.7%
Asian/Asian British: Other Asian	164	2.1%	2.9%	1.5%
Black: African	149	1.9%	4.5%	1.8%
Black: Caribbean	234	3.0%	4.0%	1.1%
Black: Other Black	52	0.7%	1.3%	0.5%
Other ethnic group: Arab	51	0.7%	0.8%	0.4%
Other ethnic group: Other	70	0.9%	0.7%	0.6%



■ White
 ■ Mixed/multiple ethnic groups
 ■ Asian/Asian British
 ■ Black/African/Caribbean/Black British
 ■ Other ethnic group

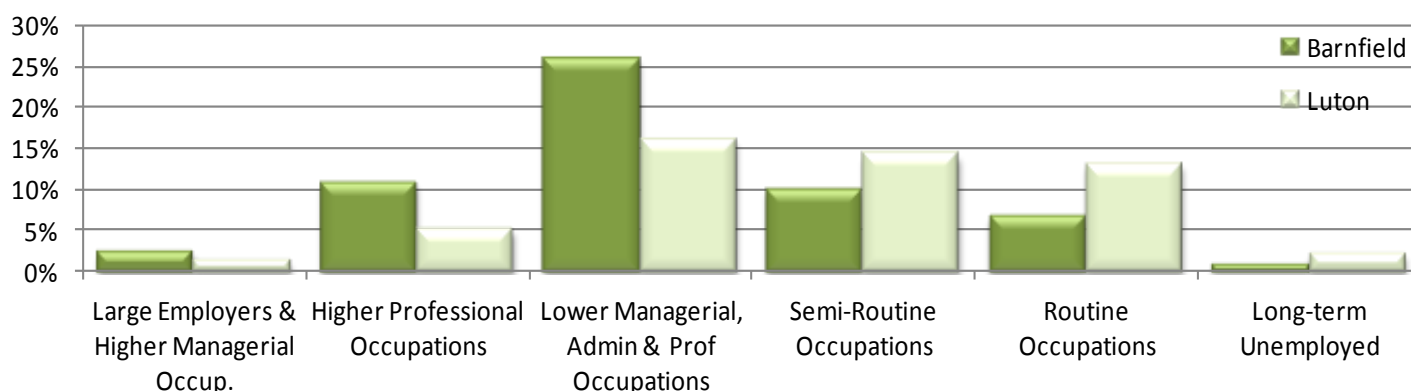
2011 CENSUS – BARNFIELD WARD PROFILE

RESIDENT POPULATION HOUSEHOLD LANGUAGE, RELIGION AND SOCIO-ECONOMIC STATUS. % CHANGE FIGURES ARE BETWEEN 2001 AND 2011 CENSUS FOR BARNFIELD WARD ONLY.

HOUSEHOLD LANGUAGE – all households	% Barnfield	% Luton	% England & Wales
<i>Proportion of people in household with English as Main Language:</i>			
~ All people aged 16+	85.0%	75.9%	91.2%
~ At least 1 but not all people aged 16+	9.3%	10.6%	3.7%
~ No people 16+ but at least 1 person aged 3-15	1.4%	2.3%	0.8%
~ No people in household have English as a main language	4.3%	11.3%	4.3%

RELIGION – all residents	Number – Barnfield	% Barnfield	% Luton	% England and Wales	% Change 2001 -2011
Christian	3,784	48.9%	47.4%	59.3%	-19.2%
Buddhist	42	0.5%	0.3%	0.4%	200.0%
Hindu	426	5.5%	3.3%	1.5%	50.5%
Jewish	36	0.5%	0.2%	0.5%	-33.3%
Muslim (Islam)	1,508	19.5%	24.6%	4.8%	238.1%
Sikh	221	2.9%	1.2%	0.8%	60.1%
Other religion	37	0.5%	0.4%	0.4%	76.2%
No religion	1,187	15.3%	16.5%	25.1%	24.4%
Religion Not Stated	495	6.4%	6.1%	7.2%	12.2%

SOCIO-ECONOMIC CLASSIFICATION – all residents aged 16-74	% Barnfield	% Luton	% England and Wales	% Change 2001 – 2011
Large Employers & Higher Managerial Occup.	2.4%	1.3%	2.4%	-56.2%
Higher Professional Occupations	10.8%	5.1%	7.9%	-64.8%
Lower Managerial & Professional Occupations	25.7%	15.9%	20.8%	8.8%
Intermediate Occupations	14.1%	12.2%	12.7%	29.3%
Small Employers & Own Account Workers	9.9%	8.8%	9.4%	41.9%
Lower Supervisory & Technical Occupations	6.0%	7.1%	6.9%	0.6%
Semi-Routine Occupations	10.0%	14.1%	14.1%	21.9%
Routine Occupations	6.7%	13.0%	11.1%	41.2%
Never Worked	4.3%	7.7%	3.9%	145.3%
Long-Term Unemployed	0.9%	2.2%	1.7%	64.5%
Full Time Students	9.2%	12.6%	9.0%	46.9%
Not Classifiable	0.0%	0.0%	0.0%	-100.0%



2011 CENSUS – BARNFIELD WARD PROFILE

RESIDENT POPULATION. UNEMPLOYMENT, ECONOMIC ACTIVITY AND QUALIFICATIONS. % CHANGE FIGURES ARE BETWEEN 2001 AND 2011 CENSUS FOR BARNFIELD WARD ONLY.

UNEMPLOYED– all unemployed people who:	Number – Barnfield	% Barnfield	% Luton	% England & Wales	% Change 2001- 2011
Are Aged 16 – 24 years	44	0.8%	1.4%	1.2%	69.2%
Are Aged 50 – 74	32	0.6%	0.9%	0.8%	60.0%
Have Never Worked	32	0.6%	1.1%	0.7%	220.0%
Are Long Term Unemployed	51	0.9%	2.2%	1.7%	64.5%

ECONOMIC POSITION – all people aged 16-74	Number – Barnfield	% Barnfield	% Luton	% England and Wales	% Change 2001 -2011
<i>Economically Active:</i>	4,032	75.0%	69.1%	69.7%	8.1%
~ Full Time Employed	2,297	42.7%	36.7%	38.5%	-4.6%
~ Part Time Employed	741	13.8%	12.7%	13.7%	27.5%
~ Self Employed	595	11.1%	8.4%	9.7%	20.4%
~ Full Time Student	218	4.1%	5.5%	3.4%	70.3%
~ Unemployed	181	3.4%	5.7%	4.4%	52.1%
<i>Economically Inactive:</i>	1,343	25.0%	30.9%	30.3%	9.9%
~ Students	282	5.2%	7.4%	5.8%	31.2%
~ Long Term Sick/Disabled	96	1.8%	3.8%	4.2%	-17.9%
~ Looking After Home/Family	272	5.1%	6.7%	4.3%	-8.7%
~ Retired	565	10.5%	9.9%	13.8%	11.4%
~ Other Inactive	128	2.4%	3.3%	2.2%	23.1%

QUALIFICATIONS – highest level, all residents aged 16+	Number – Barnfield	% Barnfield	% Luton	% England and Wales
No Qualifications	880	15.0%	23.6%	22.7%
Level 1	702	12.0%	14.6%	13.3%
Level 2	945	16.1%	14.5%	15.3%
Apprenticeship	231	3.9%	3.3%	3.6%
Level 3	691	11.8%	11.1%	12.3%
Level 4 plus	2,015	34.4%	22.3%	27.2%
Other/Level Unknown	400	6.8%	10.7%	5.7%

No Qualifications: No academic or professional qualifications

Level 1 qualifications: 1-4 O Levels/CSE/GCSEs (any grades), Entry Level, Foundation Diploma, NVQ level 1, Foundation GNVQ, Basic/Essential Skills

Level 2 qualifications: 5+ O Level (Passes)/CSEs (Grade 1)/GCSEs (Grades A*-C), School Certificate, 1 A Level/ 2-3 AS Levels/VCEs, Intermediate/Higher Diploma, Welsh Baccaulaureate Intermediate Diploma, NVQ level 2, Intermediate GNVQ, City and Guilds Craft, BTEC First/General Diploma, RSA Diploma

Apprenticeship

Level 3 qualifications: 2+ A Levels/VCEs, 4+ AS Levels, Higher School Certificate, Progression/Advanced Diploma, Welsh Baccaulaureate Advanced Diploma, NVQ Level 3; Advanced GNVQ, City and Guilds Advanced Craft, ONC, OND, BTEC National, RSA Advanced Diploma

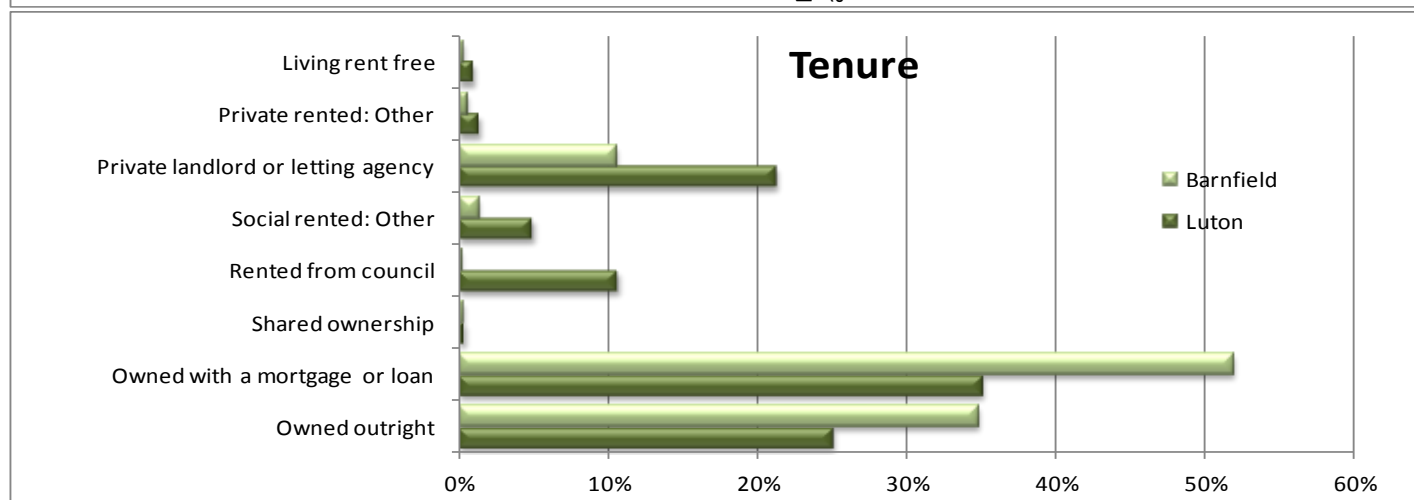
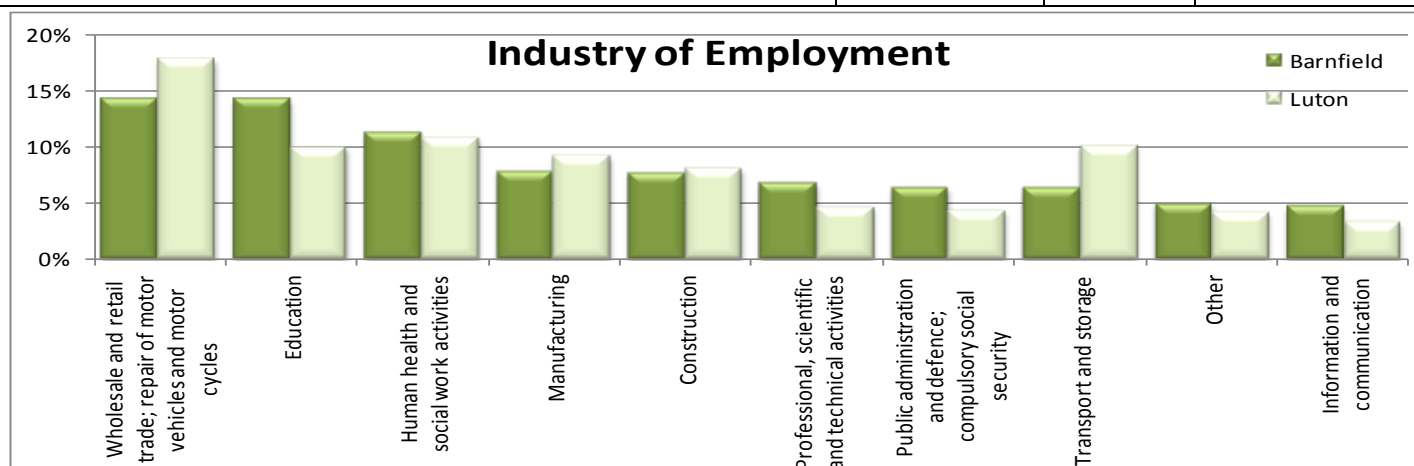
Level 4+ qualifications: Degree (for example BA, BSc), Higher Degree (for example MA, PhD, PGCE), NVQ Level 4-5, HNC, HND, RSA Higher Diploma, BTEC Higher level, Foundation degree (NI), Professional qualifications (for example teaching, nursing, accountancy)

Other qualifications: Vocational/Work-related Qualifications, Foreign Qualifications (Not stated/ level unknown).

2011 CENSUS – BARNFIELD WARD PROFILE

RESIDENT POPULATION. EMPLOYMENT BY INDUSTRY. % CHANGE FIGURES ARE BETWEEN 2001 AND 2011 CENSUS FOR BARNFIELD WARD ONLY.

EMPLOYMENT BY INDUSTRY – all residents aged 16-74 in employment	% Barnfield	% Luton	% England and Wales
Agriculture, forestry and fishing	0.0%	0.1%	0.9%
Mining and quarrying	0.0%	0.0%	0.2%
Manufacturing	7.8%	9.2%	8.9%
Electricity, gas, steam & air conditioning supply	0.3%	0.2%	0.6%
Water supply; sewerage/waste management & remediation	0.3%	0.6%	0.7%
Construction	7.7%	8.1%	7.7%
Wholesale/retail trade; repair of motor vehicles & motor cycles	14.2%	17.8%	15.9%
Transport and storage	6.3%	10.1%	5.0%
Accommodation and food service activities	4.0%	6.1%	5.6%
Information and communication	4.8%	3.3%	4.0%
Financial and insurance activities	4.5%	2.6%	4.3%
Real estate activities	1.7%	1.5%	1.4%
Professional, scientific and technical activities	6.8%	4.7%	6.6%
Administrative and support service activities	4.6%	6.3%	4.9%
Public administration and defence; compulsory social security	6.4%	4.4%	6.0%
Education	14.2%	10.0%	9.9%
Human health and social work activities	11.2%	10.8%	12.5%
Other	5.0%	4.2%	5.0%



2011 CENSUS – BARNFIELD WARD PROFILE

RESIDENT POPULATION. HOUSEHOLDS, TENURE AND ACCOMMODATION TYPE. % CHANGE FIGURES ARE BETWEEN 2001 AND 2011 CENSUS FOR BARNFIELD WARD ONLY.

HOUSEHOLD COMPOSITION – all households	Number – Barnfield	% Barnfield	% Luton	% England and Wales
All Households	2,669	100.0%	100.0%	100.0%
One Person Household: Aged 65 and over	229	8.6%	9.7%	12.4%
One Person Household: Other	259	9.7%	17.7%	17.8%
One Family Households:				
~ All aged 65 and over	193	7.2%	5.8%	8.2%
~ Married/same-sex civil p/ship: No children	349	13.1%	9.2%	12.3%
~ Married /same-sex civil p/ship: Dependent children	685	25.7%	18.3%	15.2%
~ Married/same-sex civil p/ship: Children non-dependent	219	8.2%	5.7%	5.6%
~ Cohabiting couple: No children	102	3.8%	4.1%	5.3%
~ Cohabiting couple: Dependent children	100	3.7%	3.6%	4.1%
~ Cohabiting couple: All children non-dependent	5	0.2%	0.4%	0.5%
~ Lone parent: Dependent children	166	6.2%	8.2%	7.2%
~ Lone parent: All children non-dependent	89	3.3%	3.8%	3.5%
Other household types: With dependent children	157	5.9%	6.0%	2.6%
Other Household Types: All full-time students	2	0.1%	1.2%	0.6%
Other Household Types: All aged 65 and over	10	0.4%	0.2%	0.3%
Other Household Types: Other	104	3.9%	6.0%	4.4%

TENURE – all households	Number – Barnfield	% Barnfield	% Luton	% England and Wales
All Households	2,669	100.0%	100.0%	100.0%
Owned: Owns outright	928	34.8%	25.1%	30.8%
Owned: Owns with a mortgage or loan	1,388	52.0%	35.1%	32.7%
Owned: Shared ownership	9	0.3%	0.4%	0.8%
Social rented: Rented from Council	5	0.2%	10.7%	9.4%
Social rented: Other social rented	34	1.3%	5.0%	8.2%
Private rented: Landlord or letting agency	281	10.5%	21.3%	15.3%
Private rented: Other	17	0.6%	1.4%	1.4%
Living rent free	7	0.3%	1.0%	1.4%

ACCOMMODATION TYPE – all households, unshared dwellings	% Barnfield	% Luton	% England and Wales
<i>Whole house or bungalow:</i>			
~ Detached	32.3%	12.9%	22.7%
~ Semi-detached	49.7%	40.4%	31.3%
~ Terraced (inc end)	15.7%	25.0%	24.6%
<i>Flat, maisonette or apartment</i>			
~ Purpose-built block of flats or tenement	1.6%	17.7%	16.0%
~ Part of converted/shared house (inc bed-sits)	0.2%	2.6%	3.7%
In a commercial building	0.5%	0.8%	0.9%
Caravan/other mobile/temporary structure	0.0%	0.2%	0.4%