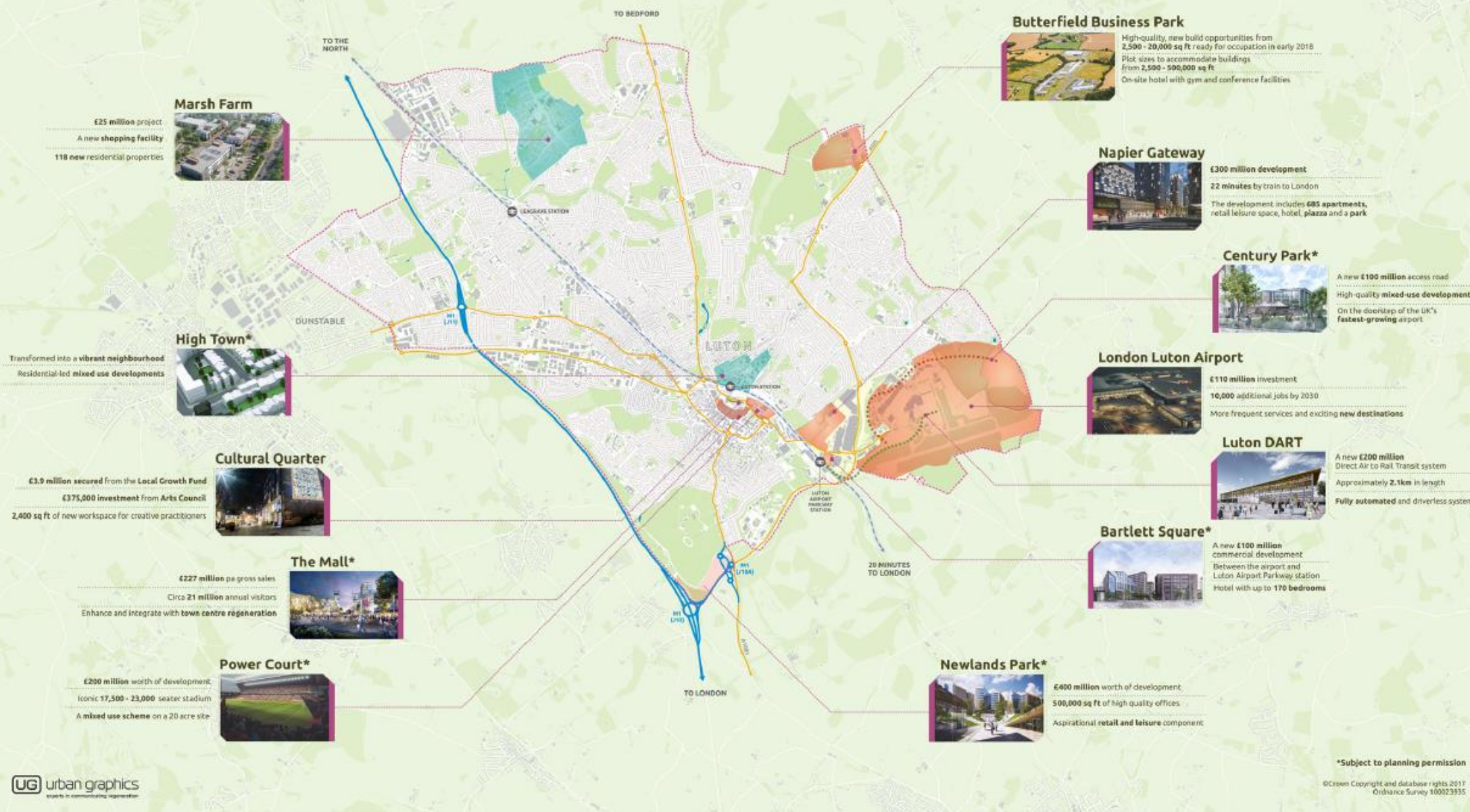


# LUTON INVESTMENT FRAMEWORK KEY DEVELOPMENTS



**Marsh Farm**

£25 million project  
A new shopping facility  
118 new residential properties

**High Town\***

Transformed into a vibrant neighbourhood  
Residential-led mixed use developments

**Cultural Quarter**

£3.9 million secured from the Local Growth Fund  
£375,000 investment from Arts Council  
2,400 sq ft of new workspace for creative practitioners

**The Mall\***

£227 million pa gross sales  
Circa 21 million annual visitors  
Enhance and integrate with town centre regeneration

**Power Court\***

£200 million worth of development  
Iconic 17,500 - 23,000 seater stadium  
A mixed use scheme on a 20 acre site

**Butterfield Business Park**

High-quality, new build opportunities from 2,500 - 20,000 sq ft ready for occupation in early 2018  
Plot sizes to accommodate buildings from 2,500 - 500,000 sq ft  
On-site hotel with gym and conference facilities

**Napier Gateway**

£300 million development  
22 minutes by train to London  
The development includes 685 apartments, retail leisure space, hotel, piazza and a park

**Century Park\***

A new £100 million access road  
High-quality mixed-use development  
On the doorstep of the UK's fastest-growing airport

**London Luton Airport**

£110 million investment  
10,000 additional jobs by 2030  
More frequent services and exciting new destinations

**Luton DART**

A new £200 million Direct Air to Rail Transit system  
Approximately 2.1km in length  
Fully automated and driverless system

**Bartlett Square\***

A new £100 million commercial development  
Between the airport and Luton Airport Parkway station  
Hotel with up to 170 bedrooms

**Newlands Park\***

£400 million worth of development  
500,000 sq ft of high quality offices  
Aspirational retail and leisure components

\*Subject to planning permission

©Crown Copyright and database rights 2017  
Ordnance Survey 100023935

UG urban graphics  
experts in communicating regeneration

SECURE MORE THAN  
**£1.5 BILLION**  
INVESTMENT

**5,700**  
NEW HOMES

DEVELOP EMPLOYABILITY AND TRAINING NETWORKS

**18,500**  
NEW JOBS

INCREASED LIFE EXPECTANCY AND LIFESTYLE CHOICES

REDUCE FLY-TIPPING AND OTHER ENVIRONMENTAL CRIMES

**Luton**